

PRE-QUALIFICATION DOCUMENTS



GRC + GRP + GRG



محمد الجيلاني لصناعة الاليف الزجاجية ذ.م.م.ش.و
MOHAMMAD AL JILANI FIBER GLASS
CEMENT PRODUCTS MANUFACTURING LLC

محمد الجيلاني لتصنيع المنتجات الاسمنتية المصنوعة من الاليف الزجاجية ذ.م.م.ش.و

MOHAMMAD AL JILANI FIBER GLASS

CEMENT PRODUCTS MANUFACTURING LLC

info@aljilanigrc.com

www.aljilanigrc.com

+971 (6) 573 7567

+971 50 685 3362

AL JILANI GRC
DUBAI

AL JILANI FIBER GLASS
SHARJAH

AL JILANI BUILDINGS MAINTENANCE
AJMAN

TABLE OF CONTENTS:



1. INTRODUCTION

- 1.1 Company Profile
- 1.2 Conclusion
- 1.3 Mission Statement
- 1.4 Vision Statement
- 1.5 Why Choose us?

2. ABOUT

- 2.1 Our Products
- 2.2 Our Services & Activities
- 2.3 Quality Assurance Statements
- 2.4 Industrial Services
- 2.5 Our Bankers
- 2.6 Organization Chart
- 2.7 Pre-Qualification History
- 2.8 Information Technology
- 2.9 Local Managements / Employees

3. LIST OF COMPLETED & ON-GOING PROJECT

4. HEALTH & SAFETY POLICY

5. QUALITY SYSTEM PROCEDURE FIELD INSPECTION PLAN

6. ALL COMPLETED & ON-GOING PROJECTS VALUE DETAILS

7. PHOTO OF ALL COMPLETED & ON-GOING PROJECTS

8. ISO CERTIFICATION

9. COMPANY TRADE LICENSE

10. VAT CERTIFICATE

11. ALL APPROVALS

1. INTRODUCTION



1.1 Company Profile

We are a leading manufacturer of GRC, GRP, and GRG products in the United Arab Emirates. Our company operates with a team of over 100 skilled professionals, supported by modern office facilities and advanced manufacturing capabilities.

Within our group, AL JILANI GRC INDUSTRY serves as a specialized manufacturing division focused on composite solutions. The company has the capacity and expertise to deliver a wide range of exterior and interior solutions, tailored to meet complex and diverse project requirements while adhering to the highest international standards.

Our in-house design team is dedicated to transforming client concepts into practical, innovative solutions. From initial design to final execution, we provide expert consultation, detailed proposals, and accurate cost evaluations. This integrated approach allows us to deliver efficient, high-quality results at competitive prices.

Our diversified capabilities enable us to offer a broad selection of materials and products, ensuring that all sourced requirements meet strict quality standards. In addition, our 20,000 sq. ft. manufacturing facility specializes in cast gypsum and related products, supported by rigorous quality control processes that further strengthen our operational excellence.

AL JILANI GRC INDUSTRY is committed to continuous development and training of its workforce, ensuring compliance with industry standards and best practices. Our highly motivated team operates in accordance with BS standards and follows a comprehensive QA/QC system to ensure consistent quality in all projects.

1.2 Conclusion

AL JILANI GRC INDUSTRY is dedicated to delivering professional services that meet and exceed client expectations, ensuring the highest standards of quality, reliability, and performance in every project we undertake

1.3 Mission Statement

At Al Jilani GRC Industry, our mission is to deliver high-quality GRC and GRP solutions by leveraging advanced manufacturing technologies, technical expertise, and innovative engineering practices. We are committed to providing value-added products and services that meet the highest standards of durability, performance, and aesthetics, while ensuring cost-effective solutions and timely project delivery to exceed our clients' expectations.

1.4 Vision Statement

AL Jilani GRC Industry aspires to be a recognized leader in the GRC (Glass Reinforced Concrete) and GRP (Glass Reinforced Plastic) materials industry by achieving a strong and sustainable market presence within the region.

We are committed to realizing this vision through the following core principles:

1. Providing customized, high-performance GRC & GRP solutions that meet the diverse requirements of construction and industrial sectors.
2. Driving innovation through advanced materials, modern technologies, and engineering excellence to solve evolving industry challenges.
3. Developing a skilled and motivated workforce dedicated to delivering superior product quality, efficiency, and continuous improvement.
4. Maintaining uncompromising standards in quality, durability, and customersatisfaction as the cornerstone of our operations.

1.5 Why Choose Us?

- **Competitive Pricing Structure:**
We offer cost-effective solutions without compromising on quality, ensuring maximum value for your investment.
- **Superior Craftsmanship:**
Our GRC & GRP products are manufactured with precision, maintaining the highest standards of durability and finish.
- **On-Time Project Delivery:**
We are committed to meeting project deadlines through efficient planning and execution.
- **Extensive Industry Experience:**
Years of expertise in GRC & GRP production and installation across diverse projects.
- **Highly Skilled Technical Team:**
Our engineers, designers, and technicians are experienced in delivering complex and customized solutions.
- **Innovative Design & Engineering Solutions:**
We provide creative and practical design solutions tailored to architectural and structural requirements.

2. ABOUT US



ORGANIZATIONAL CONSTANT- (Contact Details)

FULL ORGANIZATION NAME	: 1. MOHAMMAD AL JILANI FIBER GLASS CEMENT PRODUCTS MANUFACTURING LLC.SP 2. AL JILANI BUILDING MAINTENANCE LLC- AJMAN 3. AL JILANI G F R C TECHNICAL SERVICES LLC - DUBAI
REGISTERED ADDRESS	: MOHAMMAD AL JILANI FIBER GLASS CEMENT PRODUCTS MANUFACTURING LLC.SP P.O. Box: 00000, Al- Sajja Industrial Area, SHarjah, United Arab Emirates.
CONTACT DETAILS WEB SITE	: Tel: +971 6 573 7567 , Mob: +971 50 685 3362, E-mail: info@aljilanigrc.com / aljilanigrc@gmail.com : www.aljilanigrc.com
NATURE OF BUSINESS	: MANUFACTURING , SUPPLY & APPLY OF: GLASS FIBER REINFORCED CONCRETE (GRC) GLASS FIBER REINFORCED PLASTIC (GRP) GLASS FIBER REINFORCED GYPSUM (GRG) All Types Of GRC, GRP & GRG work are done.
MANAGING DIRECTOR MOBILE E-MAIL	: MOHAMMAD JILANI MOLLA : +971 50 685 3362 / +971 52 799 0673 : jilani@aljilanigrc.com

2.1 OUR PRODUCTS



- GLASS FIBER REINFORCED CONCRETE (GRC)
- GLASS FIBER REINFORCED PLASTIC (GRP)
- GLASS FIBER REINFORCED GYPSUM (GRG)
- All Types Of GRC, GRP & GRG work are done.

2.2 OUR SERVICES & ACTIVITIES OFFERED



Category	Services	Key Activities
Design & Engineering	Architectural & Structural Design	Shop drawings, 3D modeling, structural analysis, detailing
	Product Development	Custom mould design, prototype development
	Value Engineering	Cost optimization, material efficiency solutions
Manufacturing (GRC)	GRC Panels Production	Cladding panels, decorative façades, screens
	Architectural Elements	Cornices, domes, columns, balustrades
	Custom Products	Sculptures, ornaments, bespoke designs
Manufacturing (GRP)	GRP Tanks & Vessels	Water tanks, chemical storage tanks
	GRP Piping Systems	Pipes, fittings, ducting systems
	Industrial Products	Cable trays, gratings, enclosures
Mould Making	GRC/GRP Mould Fabrication	Steel, rubber, fiberglass moulds
	Pattern Making	CNC patterns, handcrafted models
Installation & Erection	On-site Installation	Panel fixing, structural anchoring
	Finishing Works	Joint treatment, surface finishing
	Maintenance & Repair	Restoration, refurbishment services
Quality Control & Testing	Material Testing	Strength, durability, water absorption
	Inspection	Factory QA/QC, site inspections
	Compliance	ISO standards, project specifications
Project Management	Project Planning	Scheduling, resource allocation
	Execution Management	Site supervision, coordination
	Handover & Documentation	As-built drawings, final reports
Logistics & Supply Chain	Packaging & Delivery	Safe transport, export packaging
	Procurement	Raw material sourcing, vendor management

2.3 QUALITY ASSURANCE STATEMENTS



At our GRC (Glass Reinforced Concrete) and GRP (Glass Reinforced Plastic) manufacturing and contracting operations, quality is the foundation of everything we do. We are committed to delivering products and services that consistently meet and exceed client expectations, international standards, and regulatory requirements.

Our Quality Assurance system adheres to internationally recognized standards:



We ensure excellence throughout the project lifecycle with:

- Careful selection and testing of raw materials for durability and performance
- Continuous monitoring of production processes with advanced technology
- Compliance with approved drawings, specifications, and client requirements
- Regular inspections and testing at all stages of manufacturing and installation
- Comprehensive documentation and traceability
- Prompt identification and correction of any non-conformities

Our experienced QA/QC team works closely with engineers, designers, and project managers to ensure precision in all GRC & GRP products, including façades, decorative panels, cladding systems, and custom architectural features.

Committed to Excellence Through ISO Standards



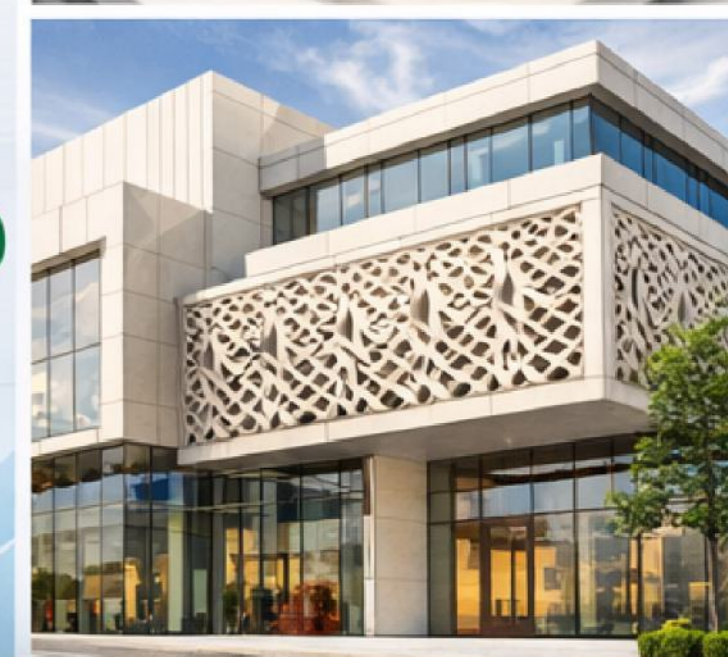
Quality



Environment



Safety



We deliver durable, reliable, and aesthetically superior GRC & GRP solutions that add lasting value to every project.



2.4 INDUSTRIAL SERVICES

GRC & GRP SOLUTIONS

Design & Engineering	Manufacturing & Production	Installation Services	Repair & Maintenance
<ul style="list-style-type: none"> • Architectural & structural design • 2D & 3D drawings • Mold development • Custom solutions 	<ul style="list-style-type: none"> • GRC & GRP production • Custom molds • Mass production QC 	<ul style="list-style-type: none"> • On-site installation • Façade & cladding • Technical support 	<ul style="list-style-type: none"> • Surface repair • Crack fixing • Maintenance contracts
Finishing & Coating	Project Management	Supply & Logistics	Custom Fabrication
<ul style="list-style-type: none"> • Surface finishing • Protective coatings • UV-resistant 	<ul style="list-style-type: none"> • Planning & execution • QA/QC • Timely delivery 	<ul style="list-style-type: none"> • Material supply • Transport • Export packing 	<ul style="list-style-type: none"> • Panels, domes, columns • Planters • Bespoke designs

2.5 OUR BANKERS



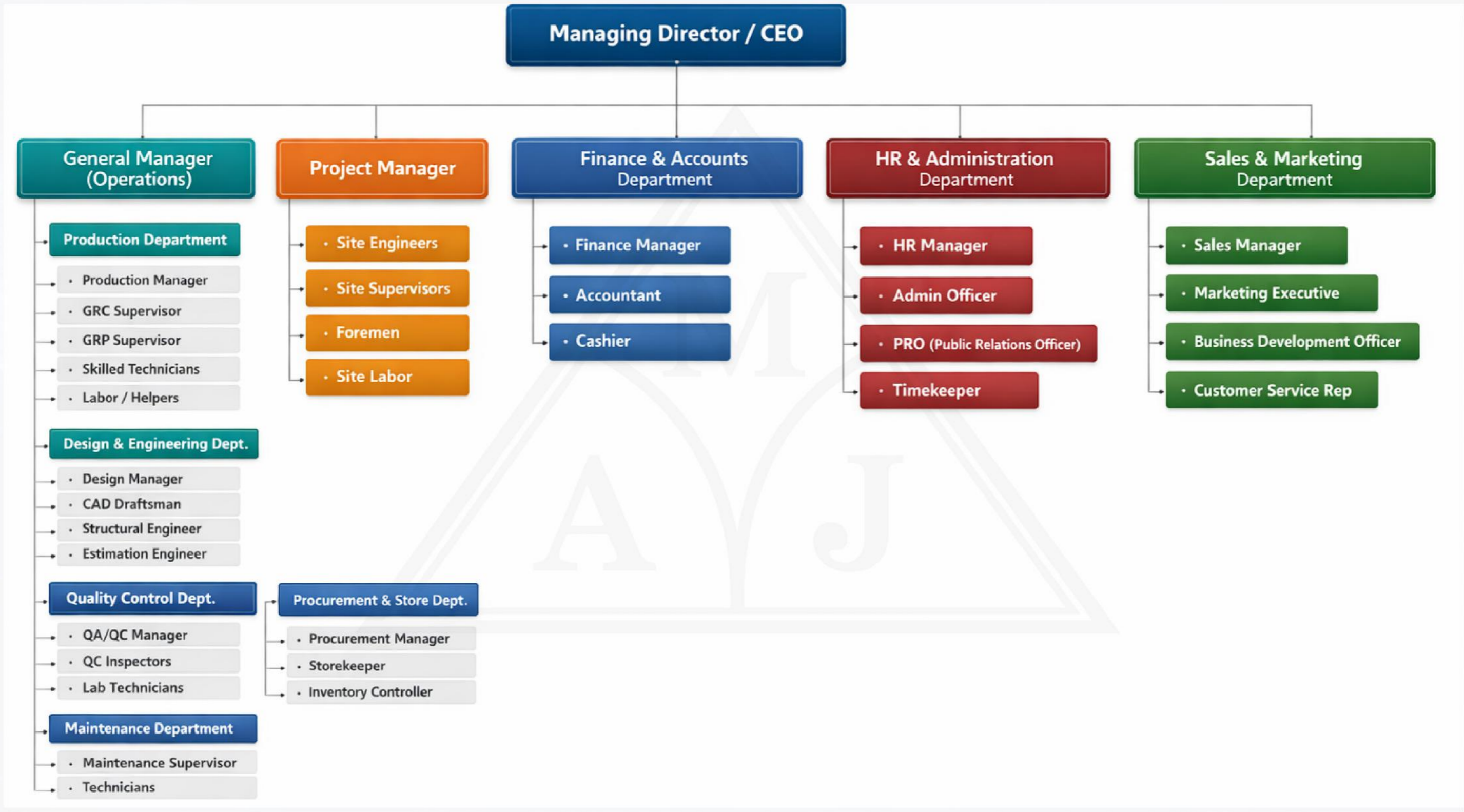
COMMERCIAL ACCOUNT

1. Bank Name : EMIRATES ISLAMIC BANK
A/C Type : Current Account
A/C Name : Mohammad Al Jilani Fiber Glass
Cement Products Manufacturing L.L.C.sp
A/C No. : 3708493050601
IBAN : AE72 0340 0037 0849 3050 601
Swift Code : MEBLAEADSBA
2. Bank Name : RAK BANK
A/C Type : Current Account
A/C Name : Mohammad Al Jilani Fiber Glass
Cement Products Manufacturing L.L.C.sp
A/C No. : 0243298744001
IBAN : AE91 0400 0002 4329 8744 001
Swift Code : NRAKAEAK



2.6 ORGANIZATION CHART

GRC & GRP MANUFACTURING COMPANY



2.7 PRE-QUALIFICATION HISTORY



Pre-Qualification Applications our company has submitted during the last 4

DAMAC	1	Approved
EMAAR	1	Approved
KASCO	1	Approved
SHARJAH ROADS & TRANSPORT AUTHORITY(SRTA)	1	Approved

INSURANCES: Insurance policy that our Organization currently has in place.

Employer's Liability

Workermen's Compentation as per UAE labor Law

2.8 INFORMATION TECHNOLOGY



List of hardware software packages currently used within our organization:

Current Hardware & Software	Qty
AUTO CAD	4
AUTO DESK	4
TALLY 9	1
PRIMAVERA	1

Details of innovations & improvements made by our organization that are be spoke or unique.

- AL JILANI GRC INDUSTRY has it's own GRC,GRP & GRG Factory at around 20,000 square feet in Al Sajja Industrial Area which is located in UAE, this enable us to manufacture Decorative GRC Elements to be supplied as per requirement.
- We have our Division that provides all Machine Parts involved in or operations per requirements.

2.9 LOCAL MANagements / EMPLOYEES



LIST OF EMPLOYEES:

DESIGNATION	NO.
DIRECTOR	1
MANAGER	1
PROJECT ENGINEERS	5
PRODUCTION MANAGER	2
SUPERVISORS	10
TECHNICIAN / SKILLED OFFICE STAFF	15
ADMINISTRATION / COORDINATION STAFF	4
SKILLED WORKERS (SITE)	60
IN-SKILLED WORKERS (SITE)	25

KEY PERSONNEL:

NAME	DESIGNATION
MOHAMMAD JILANI MOLLA	CHAIRMAN
MOHAMMAD JILANI MOLLA	GENERAL MANAGER

3. LIST OF COMPLETED & ON- GOING PROJECTS



- Dubai Mall
- Burj Khalifa
- Burj Crown
- Damac Lagoons Parcel-2/3 Malta
- Community Center at Emaar
- Marina Vista Tower Dubai
- Dubai Creek Tower
- Ashiyanan Dubai
- Aura Darden Villas
- Mosque at Al Khawaneej Park
- Mosque at Al Safa Park
- Urban Oasis
- GAMA Aviation Business Aviation center
- The Gallaria Mall
- Lagoon Views
- Villa at Nad Al Shiba
- Deira Water Front Development
- Baif Glod Souk Dubai
- Fujaitra Fish Market
- AL Barari 5/2 Villas
- Desert Leaf Villas
- AL Wahda Villas
- Sobha Hartland Dubai
- Ibnu Bathootha
- Ai Reem Inland Abu Dhabi
- Flydubai Headquarters
- Al Bahiya Residence Dubai
- Jumeira Bay Villa Dubai
- Business Bay Promenade (Project No.P532)
- Existing Villa G+1 Proposed Majilis Block
- Revathi Menon Private Villa
- Vill 16, Flame Tree Ridge
- Private Villa Renovation
- Jumeirah Bay Villa LV 48 Dubai
- Tilal Al Ghaf. Harmony 1. villa PV 05
- Jumeira Village Cluster 14, Villa
- Villa G+1 at 591,Jabal Ali
- EMAAR Sales Centre Extension
- Private Villa,Deset Leaf-5,Villa-1,Al Barai,Dubai
- YAMAS,Shamal Dh,(Pier Club) Dubai Harbour
- Jumeirah Living Penthouse 39 & 40 Level
- Handicap Sports Club at Al Ghail Area Kalba,Sharjah
- Community Center at Emaar South Development
- Villa O-110, Palm Jumeirah Dubai
- ACM- Curved Wall - Level 133, Burj Khalifa
- Villa Project Al Barsha, Dubai
- Commercial & Residential Building Plot No 115104 at Al Sabkha, Sharjah
- Building Project G+2P+8Typ+Hc,Al Qasimia, Sharjah
- Villa Project, Plot No 282-5719 at Al Khwaneej Second, Dubai
- Bridge Project at Dibba City, Sharjah
- Al Tay East, Al Suyoh Suburb,Sharjah Villas
- VAL BY KASCO
- AG Office Renovation, Dubai,

4. HEALTH & SAFETY POLICY



HEALTH & SAFETY PROGRAMMER

The Management considers no phase of its operations or administration of greater importance than accident prevention. To accomplish this goal and effectively understand the Safety Policy has been formulated and enforced.

Safety has been an integral part of each job and every employee should be responsible for the safety phase in his work just as much as any other phase. Every employee has to contribute towards his team effort.

The Policy of this Company is to strive towards achieving a safe and healthy environment for all its employees at all work sites and abide by all rules and regulations formulated for the type of work/industry as set forth in state and local standards.

Safety is of utmost importance in performance of all operations and must be an integral part of each work task. Safety should not be neglected because of undue haste; no job is so important or service so urgent that it cannot be performed safely. All employees must recognize their responsibilities in incorporating safety into their daily routine.

The Company Safety Program is designed to prevent human suffering, pain and economic loss from workplace accidents, injuries or property damage.

The health, safety and work environment of all employees and contractors' personnel employed by Modern Cladding Industry is a major concern of the Management. The Management is also concerned with the prevention of property damage, fire and security damage as well as production losses. The Management is firmly committed to taking effective action on this concern with full regard to Federal Laws, Ministerial Decrees and the Company Safety Policy.

HEALTH & SAFETY POLICY



HEALTH & SAFETY PROGRAMMER

Managers/Executives/Foremen and Supervisors are responsible for the safety of their subordinates and are required to treat occupational health, safety and loss control as a subject of major importance. They shall ensure that all practicable steps are taken to prevent accidents and maintain healthy, safe places of work.

In support of the commitment to safety, the Management monitors safety information and updates the information as required by corporate development or legislative change and ensures that safety rules are enforced, promotes awareness of safe working practices by induction courses, safety training programs and liaising with safety committees.

The Management firmly believes that safety comes First.

MANAGEMENT: AL JILANI GRC INDUSTRY

The Company strives as far as possible to provide a work place safe from recognized hazards by adhering to local regulations and industry safety standards and have a work force aware of workplace hazards that confront them and their safety responsibility to themselves, their fellow workers and the Company.

MANAGEMENT'S COMMITMENT TO SAFETY

The Management actively supports the safety effort at all levels. The policy is enforced by taking action to identify and control hazards so that everyone gets a clear message that Safety is Important.

Clearly defined responsibilities are fixed for all levels of Management; it is an integral part of every task and is used in evaluation of the overall performance of a team.

As supervisors know that safety is one of the yardsticks to measure their performance, they become more involved in the safety effort of the Company. The lines of communication between the Management and the employees are always open and the workers are encouraged to participate actively in identifying and controlling workplace hazards as the employees at job sites are best people to know the problem and conditions of site.

HAZARD IDENTIFICATION, FORMAL/INFORMAL INSPECTIONS

Informal inspections are made on a daily basis by supervisors and works before the commencement of work by examining their own work area and correcting any problems found before any injury results.

Our Company encourages workers to report problems to project Management's attention without fear of reprisals and a formal inspection is internally conducted by the company's Safety personnel. This helps in reminding the line supervisors their responsibilities of the safety effort. The inspection serves to keep everybody on his toes. A formal inspection report is included during this inspection with copies marked to the General Management.

PLANNING FOR SAFETY

Planning for safety starts during the process of mobilization of the project and continues till all work is completed and the last workman leaves the site. If safety is left to chance and considered an afterthought it will not be effective. Written guidelines are provided for all employees to follow in the Safety Handbook of the Company. A checklist is available during the planning stage for consideration in the implementation of the Safety Program.

Project Safety Planning Check-List

- I. Will there be a full-time safety person assigned to the site.
- II. Are copies of-
 - A. Accident Report Sheets
 - B. Emergency phone number posters available at site.
- III. Are medical emergency services available?
- IV. Is there sufficient communication system in the workplace?
- V. Are workplaces security measures like fencing, lighting and watchman arrangements complete.
- VI. Is the electrical grounding in place?
- VII. Are sanitary fittings and drinking water available as per regulations?

The Following records/papers are to be available at the site:

- Safety signs, notices, posters and a copy of the Safety Handbook.
- The required maintenance and testing records for equipment at site like cranes, excavators, compressors, dumpers etc.
- Accidents Report forms.
- Warning signs, no smoking, Hard Hat area, No Trespassing etc. Certificates of First Aider for the Site.

HEALTH & SAFETY POLICY



Firs Aid Register- Recording all minor/ major injuries and how they have Occurred. The following protective material is check- list are also used:

- ✓ Hardhats/ Helmets
- ✓ Safety Boots
- ✓ Safety Glasses, Goggles and Face Shields
- ✓ Hearing protection
- ✓ Gloves
- ✓ Fall protection Safety Belts
- ✓ Flash Lights
- ✓ Storage containers for Flammable and combustibile materials
- ✓ Tags for defective tools and equipment.

All work opeptions are periodically reviewed to detemine if any additional safety Equipment is necessary. Inspection of all equipment, tools and supplies are made Prior to each use.

DISCIPLINARY ACTION

If the employees do not adhere to safety standards in spite of repeated warnings, a system of imposing Fine is being evolved with the rate of fine being proportional to the severity of the safety violation committed.

TRAINING COMMUNICATION

Safety training and orientation are necessary elements of any effective safety Program supervisors and Workers must understand the company's safety policy and procedures and hazards associated with work.

Training is provided to workers when they arrive on the site in the form of informal lectures on the safe Usage of tools, other equipment and the necessity of using personal protective equipment. The training Covers the company and projects safety policies and safety regulations.

Tool Box talks are also held weekly on the sites to refresh the memories on safe handling of various tools Used in the industry.

Site Foremen and Store Keepers are sent for First Aid/Fire Fighting Courses to keep them updated. These trained persons then communicate the knowledge gained by them to the other employees.

Films on safety are screened in the labor accommodation provided.

SAFETY & HEALTH POLICY STATEMENT

- Prevention of All Injuries and Occupational Diseases, Health and Safety is a Line Management.
- Health and Safety are of Equal Importance to the Business Objectives, Creation of a Safe and health Working Practices.
- Ensuring Effective Health and Safety Communication.
- Creating Interest and Enthusiasm in Health and Safety.
- Developing Personal Responsibility and Safety.
- We believe that Every Job can be Done Safety and that Safety is Everyone's Responsibility.

CALCULATION OF ACCIDENT - RATES

To compare the safety performance of one workshop with and other or one site with another, the following formula is used for calculation of the Frequency rate of accidents represented by letter F.

$$F = \frac{\text{Number of Injuries} \times 1000}{\text{Total Work Hours}}$$

Example : An undertaking with 500 workers working 50 weeks of 48 hours each had 60 accidents causing Injury during one year.

Owing to various factors like illness, accidents and other reasons workers were absent for 5% of the aggregate working one. Thus, the total

Number of working hours $500 \times 50 \times 48 = 1,200,000$ has to be reduced by 5% thus giving total workers as 1,140,000

$$\begin{aligned} F &= \frac{60 \times 1,000}{1,140,000} \\ &= 52.63 \end{aligned}$$

This frequency rate indicates that about 53 accidents causing injury occurred per million working hours.

SEVERITY RATE OF ACCIDENTS

To obtain better idea of the situation, the severity rate is calculated on the basis of total number of days lost per thousand man-hours of work.

Example: If in the example given for frequency rate, the total days lost as a result to the 60 accidents was 1200, the severity rates would be:

$$\begin{aligned} S &= 1,200 \times 1,000 \\ &1,140,000 \\ &= 1.053 \end{aligned}$$

This means that about one day was lost per thousand-man hours of work or on the basis of 2400 work hours per year.

Practical demonstrations are made in areas for lifting techniques, firefighting, emergency procedures and first aid.

Incentive Schemes are enforced such as reward competitions and prizes for sites with minimum man-days lost on account of accidents.

Analysis of accidents and man hours lost are calculated at half yearly intervals to arrive at the accident frequency rate and the Accident Incidence rate. The method used for calculation of accident rates and severity rates of accidents are given on the following pages.

Posters imparting the message of safety are put up in accommodation areas and in the pickup transport provided for workmen. Notice boards are put up on all sites with the safety regulations on them.

Pocket safety hand books are given to each site which contains safety rules.

5. QUALITY SYSTEM PROCEDURE FIELD INSPECTION PLAN



1.0 PURPOSE

This procedure establishes the instructions for overall field inspection activities and the preparation and control of Inspection Plan (IP) for field construction activities, for Project Commercial & Residential building on plot No. 3678

2.0 SCOPE

This procedure is applicable to field inspection performed by AL JILANI GRCINDURY and project procedure

3.0 DEFINITIONS:

3.1 Inspection and Plan (IP)

A document, which identifies the main activities such as inspection, examination and test etc., to be performed during fabrication or installation.

3.2 HOLD POINT [H]

A designated point during or following a specific activity at which inspection or examination cannot be by-passed through next work without designated inspector's witness or any prior written.

3.3 WITNESS POINT [W]

A designated point during or following an important activity at which inspection or examination is required in accordance with the relative procedure. Work may proceed through the designated witness point if the inspector is not present for the previously established activity.

3.4 SPOT WITNESS POINT [SW]

A designated point during or following an activity at which spot inspection or spot examination is required in accordance with the relative procedure. Work may proceed through the designated witness point if the inspector is not present for the previously established activity.

3.5 REVIEW POINT [R]

It is processed through reviewing any result of inspection or test report as a method of ensuring that the inspection is performed in accordance with any approved drawing, procedure, specifications or acceptance criteria.

QUALITY SYSTEM PROCEDURE FIELD INSPECTION PLAN



3.6 SURVEILLANCE [S]

It is processed through the routine act of monitoring or observing to verify an item or activity conforms to specified requirements.

3.7 MAIN CONTRACTOR
EMIRATES LINK MALTAURO

3.8 CONTRACTOR/SUPPLIER
AL JILANI GRC INDUSTRY

4.0 REFERENCE

4.1 Project Quality Management Plan

4.2 Quality System Procedure QSP-004: Procurement Control Procedure

4.3 Quality System Procedure QSP-006: Non-conformance Product Control Procedure

4.4 Quality System Procedure QSP-007: Corrective and Preventive Action Procedure

4.5 Quality System Procedure QSP-009: Quality Record Control Procedure

4.6 Division 1 Specification section 01400

QUALITY SYSTEM PROCEDURE FIELD INSPECTION PLAN



5.0 RESPONSIBILITY

5.1 Quality Manager is responsible for;

- Controlling the overall inspection activities including field inspection.
- Reviewing of IP including designating of Witness / Hold points.
- Assigning the trained QC Engineers to QC inspection activities.
- Maintaining and updating the approved IP and its master files

5.2 The QC Engineer (QCE) is responsible for;

- Preparation of inspection plans.
- Selection of Witness / Hold points for work to verify conformance to the requirements of specified documents (i.e. procedure, specification, code and standard etc.)
- Performing the inspection pertaining to Witness / Hold points at the appointed time.
- Forwarding the audit plan and the audit checklist to QA/QC Manager for his review.

5.3 Each Manager of Construction Section is responsible for;

- Preparing Acknowledgment of IP including designation of Witness / Hold points.
- Overall supervising the work preparation for inspection activities.
- Providing timely written inspection notification to QCE in accordance with approved IP.

5.4 Field Engineer (SP) / Subcontractor are responsible for;

- Providing timely written inspection notification to QCE in accordance with approved IP.
- Taking a prompt corrective action for rejected items.

QUALITY SYSTEM PROCEDURE FIELD INSPECTION PLAN



Type	Symbol
Vendor,s Test	VC
Contractor,s Witness	CW
Owner,s Witness	OW
Contractor,s Review	CR
Contractor,s Hold Point	CH
Owner,s Hold Point	OH

Category	Combination of Types
A	VT & CR
B	VT & CW
C	VT, OW & CR
D	VT & CR
E	VT,OH & CR

QUALITY SYSTEM PROCEDURE FIELD INSPECTION PLAN



AL JILANI GRC INDUSTRY shall convene a general Pre-Inspection Meeting with the Owner prior to the start of construction. The agenda for the pre-inspection meeting shall include the following;

- General policy and procedure for field inspection
- Field Inspection organization
- Categorization of field inspection Items
- Applicable Codes, Standards, Criteria, Requirements, etc.

Communication channels within the AL JILANI GRC INDUSTRY's organization and between the Owner and AL JILANI GRC INDUSTRY.

6.2 Application for and Notice of Witness

6.2.1 For the field inspection items agreed to be classified as Category A, B, D, HDEC may proceed with the inspection.

6.2.2 For Category C, E field inspection items, inspection procedure is as follows;

1. Shall submit to the Owner a "Request for Inspection (Attachment 7J)" notification, a minimum of 1 Working day prior to the proposed inspection.
2. If it becomes necessary for the Contractor to change the schedule (date, time, etc.), He shall promptly notify the Owner of the proposed change.
3. Category C, E inspection shall be scheduled by GRC UNIVERSAL DECORATION only during Owner's working hours as defined in Contract document or agreement between AL JILANI GRC INDUSTRY and Owner. In case that the night shift working crew are organized, the Witness inspection will be scheduled in night time.
4. For the items fabricated by subcontractor from outside of SHARJAH QC Engineer shall provide Inspection notification to Owner at least 1 week in advance for required Witness / Hold points. (Refer to Quality System Procedure for Shop Inspection & Test, QSP-01)

QUALITY SYSTEM PROCEDURE FIELD INSPECTION PLAN



6.3 Notice from the Owner to AL JILANI GRC INDUSTRY

6.3.1 After receiving the application from AL JILANI GRC INDUSTRY under paragraph 6.2.1,

6.2.2 above, the Owner shall notify AL JILANI GRC INDUSTRY whether it intends to witness the field inspection on the proposed date or make any schedule adjustment with AL JILANI GRC INDUSTRY as necessary.

6.2.3 After receiving the application from AL JILANI GRC INDUSTRY, the Owner shall notify to AL JILANI GRC INDUSTRY whether it intends to witness the field inspection on the proposed date or make any schedule adjustment with AL JILANI GRC INDUSTRY as necessary.

6.2.4 When AL JILANI GRC INDUSTRY notification is acceptable and the witness inspection is to be carried out timely, the Owner may confirm the schedule on the copy of Notification Sheet submitted by means of simple stamping or signing.

6.4 Inspection-plan (IP)

6.4.1 Inspection and Test Plan shall be prepared by QC Engineer according to construction detail schedule on the basis of the applicable drawings, work plan procedures and specifications.

6.4.2 IP prepared by QC Engineer shall be approved by the QA/QC Manager.

6.4.3 QC Engineer / SP shall submit internally reviewed and approved inspection to Owner for Witness / Hold points selection and approval of those inspection plans at reasonable working days in advance of the activity.

6.4.4 QC Engineer / SP shall distribute copies of final accepted inspection plan to all concerned parties (SP / QCE / Owner).

QUALITY SYSTEM PROCEDURE FIELD INSPECTION PLAN



6.5 Field Inspection and Remedial Work

6.5.1 QC Engineer / SP follow up the inspection activities in accordance with the approved inspection and test plans. QC Engineer / SP prepare for inspection schedule weekly. (Attachment 7.4).

6.5.2 In the event that the construction work or the materials and equipment fail to pass the field inspection in part or in whole, shall BE rectify or replace such defective portion, and following shall apply:

1. For the Field items in Category A, B, D, shall repeat the Field Inspection in the same manner and until such time as the items meets all the requirements of the specification.
2. For the Field inspection items in the Category C, E, repeat the notification and witness inspection until the modification is satisfied to the requirements as same manner of previous clause 6.2.2

6.6 Subcontractor / Field Engineer shall notify the assigned inspection / test point to QCE and Owner for inspection, in one day advance.

6.7 QCE / Owner follow up the inspection activities in accordance with the requirements of applicable procedure and IP.

7. DOCUMENTATION

7.1 The inspection results shall be documented on the related reports / checklists.

7.2 The inspection records shall be retained in QC department.

8. ATTACHMENT

8.1 Inspection Report Numbering System

8.2 Form QSP-010/1 Request for Inspection / Test

8.3 Form QSP-010/2 Field Inspection and Test Plan

8.4 Form QSP-010/3 Check List for OOOOOO

8.5 Form QSP-010/4 Check List for General

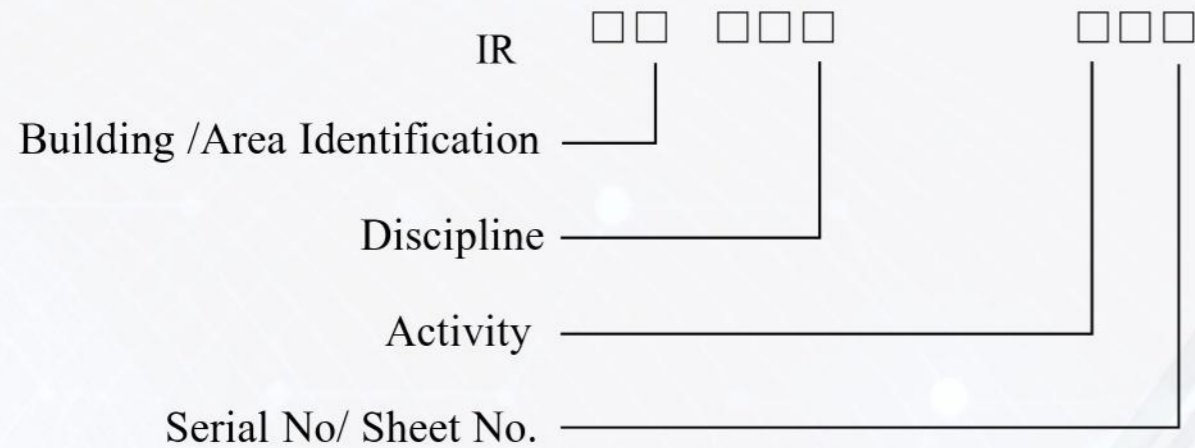
8.6 Form QSP-010/5 Weekly Inspection Schedule sheet

QUALITY SYSTEM PROCEDURE FIELD INSPECTION PLAN



Attachment 8.1. Inspection Report Numbering System

All Inspection reports except for vendor/TPA report shall include AL JILANI GRC INDUSTRY document numbering in the following format:



IR: Inspection Report

Building/ Area Identification

Discipline

A: Architecture
I: Instrumentation
L: Landscape
G: General

C: Civil
S; Steel Structure

Activity

Ex: EW(Earth work), CW(Concrete work)....., etc.

Serial Number 3(three) digit

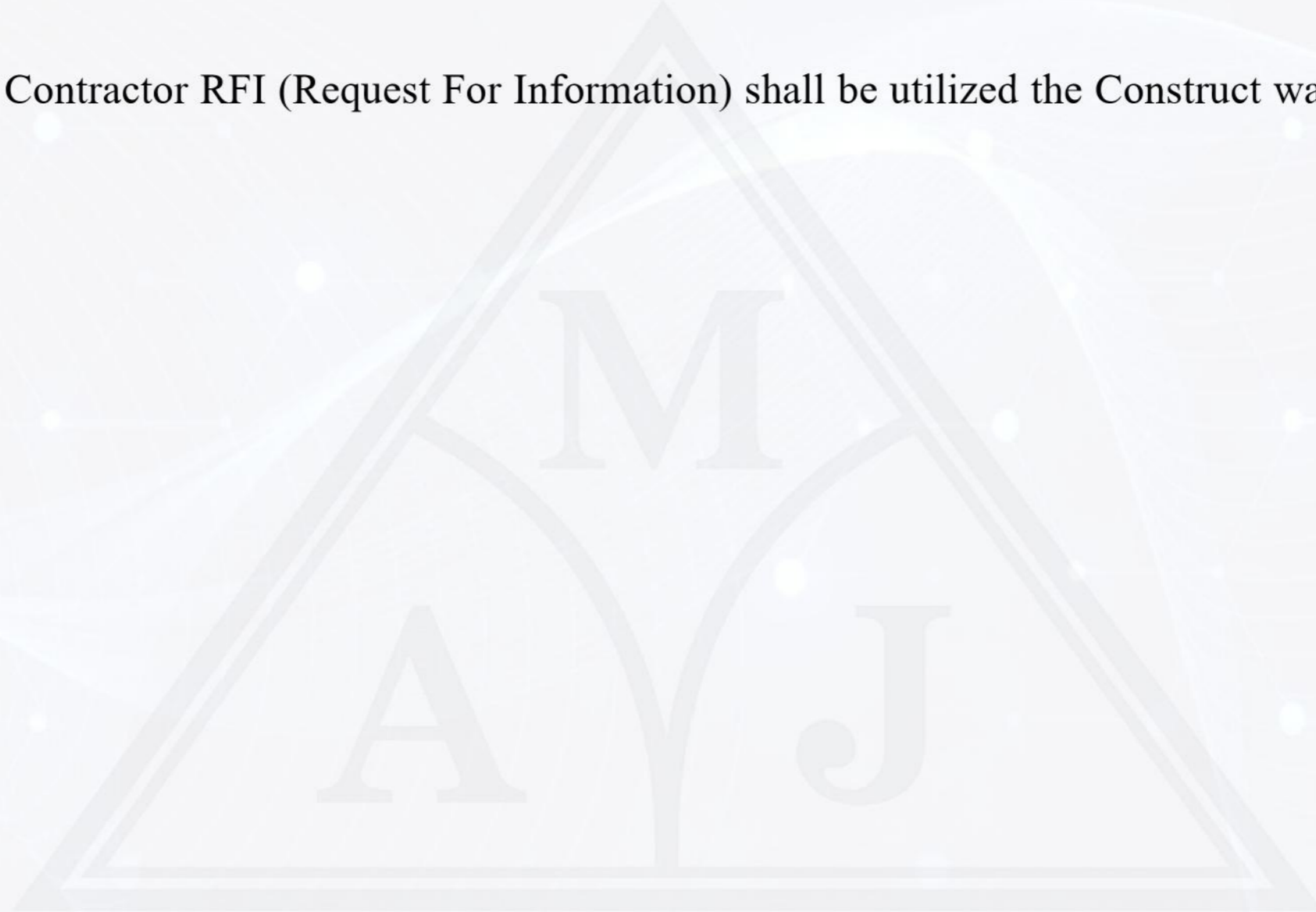
001, 002, 003, 00

QUALITY SYSTEM PROCEDURE FIELD INSPECTION PLAN



Attachment 8.2. Form QSP-010/1 Request for Inspection
Form SQP-010/1

- The format of Contractor RFI (Request For Information) shall be utilized the Construct ware program.



QUALITY SYSTEM PROCEDURE INSPECTION & TEST PLAN FOR EXTERIOR GRC WORKS



A. Term and definition

- AL JILANI GRC INDUSTRY : Contractor
- Hold Point (H): A designated point during or following a specific activity. Work may not proceed beyond this point until the inspection has taken place and been witnessed by the required parties.
- N/A: Not applicable.
- Review Point (R): It is processed through reviewing any results of inspection or test as a method of ensuring that the inspection or test is performed in accordance with any approved drawing, procedure, specifications or acceptance criteria.
- Spot Witness Point (SW): A designated point during or following an activity at which spot inspection or spot examination is required in accordance with the relative procedure. Work may proceed through the designated witness point if the inspector is not present for the previously established activity.
- Subcontractor (SUB): Any company or person, to whom has sub-contracted directly or indirectly at any level, any part of the project including consortium member.
- Surveillance (S): It is processed through the routine act of monitoring or observing to verify an item or activity conforms to specified requirements.
- Witness Point (W): A designated point during or following an important activity at which inspection or examination is required in accordance with the relative procedure. Work may proceed through the designated witness point if the inspector is not present for the previously established activity.

QUALITY SYSTEM PROCEDURE INSPECTION & TEST PLAN FOR EXTERIOR GRC WORKS



A. Inspection Level (refer QSP-010 Clause 6.0)

For the field inspection items agreed to be classified as Category A, B, D, may proceed with the inspection or tests.

For Category C, E field inspection items, inspection procedure is as follows;

1. AL JILANI GRC INDUSTRY shall submit to the Owner a "Request for Inspection / Test" notification, a minimum of 1 working day prior to the proposed inspection.
2. If it becomes necessary for the Contractor to change the schedule (date, time, etc.), He shall promptly notify the Owner of the proposed change.
3. Category C, E inspection shall be scheduled only during working hours as defined in Contract Agreement. In case that the night shift working crew are organized, the witness inspection will be scheduled in night Time.
4. For the items fabricated by subcontractor from outside of Sharjah, QC Engineer shall provide inspection Notification to Owner at least 1 week in advance for required Witness / Hold points.

6. ALL COMPLETED & ON-GOING PROJECT



CONTRACTOR	PROJECT NAME	SCOPE OF WORK	PROJECT VALUE	COMPLATION YEAR
01. WADI AL DECOR CONT	AL MAMZAR PARK	ONLY FIXING OF GRC& GRP WORK	1.5 MILLION	2019
02. AL SHARAF A GRC LLC	MAKKAN HATTA	ONLY FIXING OF GRCWORK	08.0 MILLION	2019
3. GRANDOOR INTERIOR LLC	BOMBAY RET.	ONLY INSTALLATION OF GRC WORK	01.0 MILLION	2019
4. ELEMENTS DECOR LLC	AROLINK PUBLIC AREA CENTRE	ONLY INSTALLATION OF GRC WORK	05.0 MILLION	2019
5. AROMATIC FIBER GLASS DEVELOPMENT	AJMAN VILLA	ONLY INSTALLATION OF GRC WORK	0.3 MILLION	2020
6. SENSIBLE GROUP	AJMAN	SUPLLY & ONLY INSTALLATION OF GRC CLADDING WORK	0.09 MILLION	2020
7. DECO PANI CLODDING LLC	DUBAI	SUPLLY & ONLY INSTALLATION OF GRC WORK	1.0 MILLION	2020
8. AL ROSTAMANI TRD.CO	DEIRA DUBAI	ONLY FIXING WORK	0.5 MILLION	2020
9. GRC DESIGNING FAC.	RESD. VILLA	ONLY FIXING WORK	0.4 MILLION	2020
10. INAYA FMS	PAHA APT-423 BUILDING	SUPLLY & ONLY INSTALLATION OF GRC CLADDING	1.0 MILLION	2021

6. ALL COMPLETED & ON-GOING PROJECT



CONTRACTOR	PROJECT NAME	SCOPE OF WORK	PROJECT VALUE	COMPLATION YEAR
11 ARB SQUER STONE INTERIOR DEC.	DUBAI	INSTALLATION OF GRC WORK	0.8 MILLION	2021
12. TCTI BRANCH OF WAFI IND.	AL BADIA PHASE	INSTALLATION OF GRC WORK	1.0 MILLIOM	2022
13 AL BAIT AL MALAKY	ARADA SHARJAH	INSTALLATION OF GRC WORK	1.0 MILLION	2022
13 AL BAIT AL MALAKY	ARADA SHARJAH	INSTALLATION OF GRC WORK	1.0 MILLION	2022
14. GRC UNIVERSAL DECORATION	ASHIYANA	INSTALLATION OF GRC WORK	0.6 MILLION	2022
15. GRC ATR LINE	BATIA	INSTALLATION OF GRC WORK	05 MILLION	2022
16. PANTHEON ELYSEE REAL ESTATE DEV.	PRIVATE VILLA DUBAI	GRCX DOME & SCREEN WORK	1.0 MILLION	2022
17. ZAHRAT MASAFI	PROPOSED BLDG	INSTALLATION OF GRC WORK	0.30 MILLION	2023
18. GREENLINE BARSHA FIBER GLASS	DUBAI	INSTALLATION OF GRC WORK	2.0 MILLION	2023
19. ZAHRAT MASAFI	PROPOSED BLDG	INSTALLATION OF GRC WORK	0.30 MILLION	2023

6. ALL COMPLETED & ON-GOING PROJECT



CONTRACTOR	PROJECT NAME	SCOPE OF WORK	PROJECT VALUE	COMPLATION YEAR
20. GREENLINE BARSHA FIBER GLASS	DUBAI	INSTALLATION OF GRC WORK	1.0 MILLION	2023
21. TCTI BRACH OF WAFI IND.	GRANDBULE	INSTALLATION OF GRC WORK	2.0 MILLION	2023
22. BLUE PEARLS CONT. LLC	DUBAI	INSTALLATION OF GRC WORK	0.10 MILLION	2023
23. BLUE RHINE CONTRACTING LLC	AL-BARARI VILLA	SUPPLY & APPLY OF GRC WORK	0.50 MILLION	2023
24. TCTI BRANCH OF WAIF IND.	DUBAI CREEK HARDBOUR(ECC)	SUPPLY & APPLY OF GRC WORK	2.0 MILLION	2023
25. SOBHA CON.	REVATHI MENON PRIVATE VILLA	SUPPY & APPLY OF GRC WORK	0.5 MILLION	2023
26. SPEED FIRE & SAFETY EQUIPMENT LLC	DUBAI	SUPPLY & APPLY OF GRC WORK	0.6 MILLION	2024
27. BLUE PEARLS TECH LLC	DUBAI	SUPPLY & APPLY OF GRC WORK	0.6 MILLION	2024
28. YOUBI DECORE LLC	DUBAI VILLA	SUPPLY & APPLY OF GRC WORK	0.5 MILLION	2024
29 ADHWA BLDG. CONT.	MOJLIS BLOCK	SUPPLY & APPLY OF GRC WORK	0.3 MILLION	2024

6. ALL COMPLETED & ON-GOING PROJECT



CONTRACTOR	PROJECT NAME	SCOPE OF WORK	PROJECT VALUE	COMPLATION YEAR
30. GINCO	DAMAC LAGONS PERCEL MALTA -3	SUPPLY & APPLY OF GRC WORK PANEL/CLADDING/ FRAME/CORNICE	2.5 MILLION	2024
31. BOSCO ALUMINIUM & GLASS CO. LLC	PALECE BEACH RESIDENCE DHD PLOT 12	SUPPLY & APPLY OF GRP PANEL / CLADDING/ CORNICE/ SCREEN	0.2 MILLION	2024
32. PRIVATE VILLA- 42	AJAMN	SUPPLY & APPLY OF GRC WORK	2.5 MILLION	2024
33. SHAPOORJI PALLONJI MIDEAST LLC	TITAL AL GHAF-AURA-1,2 & AURA GARDEN VILLAS	SUPPLY & APPLY OF GRC WORK	1.0 MILLION	2024
34. JUMEIRAH	SWIMING POOL	SUPPLY & APPLY OF GRC WORK	0.1 MILLION	2024
35. EXOTIC POOL LLC	DUBAI	SUPPLY APPLY OF GRC PLANTERS	0.1 MILLION	2024
36. AL QUOZ MOSQUE	DUBAI	SUPPLY & APPLY OF GRC WORK	0.1 MILLION	2024
37. TERRA INTERNATIONAL CONSTRUCTION LLC	DUBAI	SUPPLY & APPLY OF GRC WORK	0.2 MILLION	2024
38. FIBEX CONTRACTING LLC	PRIVATE VILLA RENOVATION WORK	SUPPLY & APPLY OF GRC WORK	0.1 MILLION	2025
39. ALMAYYAS TECH. SER.LLC	SON GROWS SYSTEMS LTD.	SUPPLY & APPLY	0.1 MILLION	2025

6. ALL COMPLETED & ON-GOING PROJECT



CONTRACTOR	PROJECT NAME	SCOPE OF WORK	PROJECT VALUE	COMPLATION YEAR
40. ADHWA AL AMARAH BLDG. CONT. LLC	EXISTING VILLA G+1 MAJLIS BLOCK BOUNDARY WALL	SUPPLY & APPLY OF GRC WORK	0.5 MILLION	2025
41. VILLA AND MOR E INTERIOR	TITAL AL GHAF, HARMONY 1, VILLA PV 05, DUBAI,UAE	SUPPLY & APPLY OF GRC WORK	0.6 MILLION	2025
42. BCI FITOUT CONT. LLC	5/2 ALBARARI	SUPPLY & APPLY OF GRC WORK	0.3 MILLIOM	2025
43. DESERT GROUP LLC	BURIED UPLIGHT FOR TREES	SUPPLY & APPLY OF GRC WORK	0.3 MILLIOM	2025
44. ADNANN CONT. LLC	THUKER CLUB MOSQUE AT SAFA PARK, DUBAI,UAE	SUPPLY & APPLY OF GRC WORK	0.7 MILLION	2025
45. CHC BLDG. LLC	THUKER CLUB MOSQUE AT KHAWANEEJ PARK, DUBAI,UAE	SUPPLY & APPLY OF GRC WORK	0.7 MILLION	2025
46. GLOBE STAR CONST. LLC	SHARJAH EQUINE HOSPITAL EXTENSION, SHARJAH, UAE	SUPPLY & APPLY OF GRC WORK	0.1 MILLION	2025
47. GLOBE STAR CONST. LLC	PROPOSED VILLA G+1 AT 591, JABAL ALI, UAE	SUPPLY & APPLY OF GRC WORK	0.3 MILLION	2025
48. AL LAMASAT AL MAHEARA TECH. WORKS	BOUNDARI WALL	SUPPLY & APPLY OF GRC WORK	0.4 MILLION	2025
49. KINNARPS PROJECT SOLUTIONS LLC	YAMAS, SHAMAL DH, (PIER CLUB) DUBAI	SUPPLY & APPLY OF GRC WORK	0.2 MILLION	2025

6. ALL COMPLETED & ON-GOING PROJECT



CONTRACTOR	PROJECT NAME	SCOPE OF WORK	PROJECT VALUE	COMPLATION YEAR
50. BURHANI CONT. LLC	JUMEIRAH LIVING PENTHOUSE 39 & 40 LEVEL, WORLD TRADE CENTER	SUPPLY & APPLY OF GRC WORK	1.0 MILLION	2025
51. DESERT LEISURE SWIMMING POOLS L.L.C	BUSINESS BAY PROMENADE (PROJECT NO. P532)	SUPPLY & APPLY OF GRC WORK	0.1 MILLION	2025
52. LENO CASA TECNICAL SERVICES LLC	DUBAI	ONLY SUPPLY OF GRC WORK	0.1 MILLION	2025
53. AL QUWA TECHNICAL WORKS	DUBAI	ONLY SUPPLY OF GRC WORK	0.05 MILLION	2025
53. ENRISE FIBRE TECHNICAL SERVICES L.L.C	DUBAI	ONLY SUPPLY OF GRC WORK	0.08 MILLION	2025
53. SAMA AL TAQADOM LLC	DUBAI	GRC DECORATIVE WORK	0.03 MILLION	2025
54. FIBREX CONTRACTING LLC	EMMAR SALES CENTER	SUPPLY & APPLY OF GRC WORK	0.1 MILLION	2025
55. GINCO GENERAL CONTRACTING LLC	COMMUNITY CENTER AT EMAAR SOUTH DEVELOPMENT, DUBAI	SUPPLY & APPLY OF GRC WORK	4 MILLION	2025
56. BCI FITOUT CONT.LLC	VILA O-110, PALM JUMEIRAH DUBAI	SUPPLY & APPLY OF GRC WORK	0.1 MILLION	2025
57. KINNARPS PROJECT SOLUTIONS LLC	ACM- CURVED WALL - LEVEL 133 BURJ KHALIFA,DUBAI	SUPPLY & APPLY OF GRC WORK	0.1 MILLION	2026

6. ALL COMPLETED & ON-GOING PROJECT

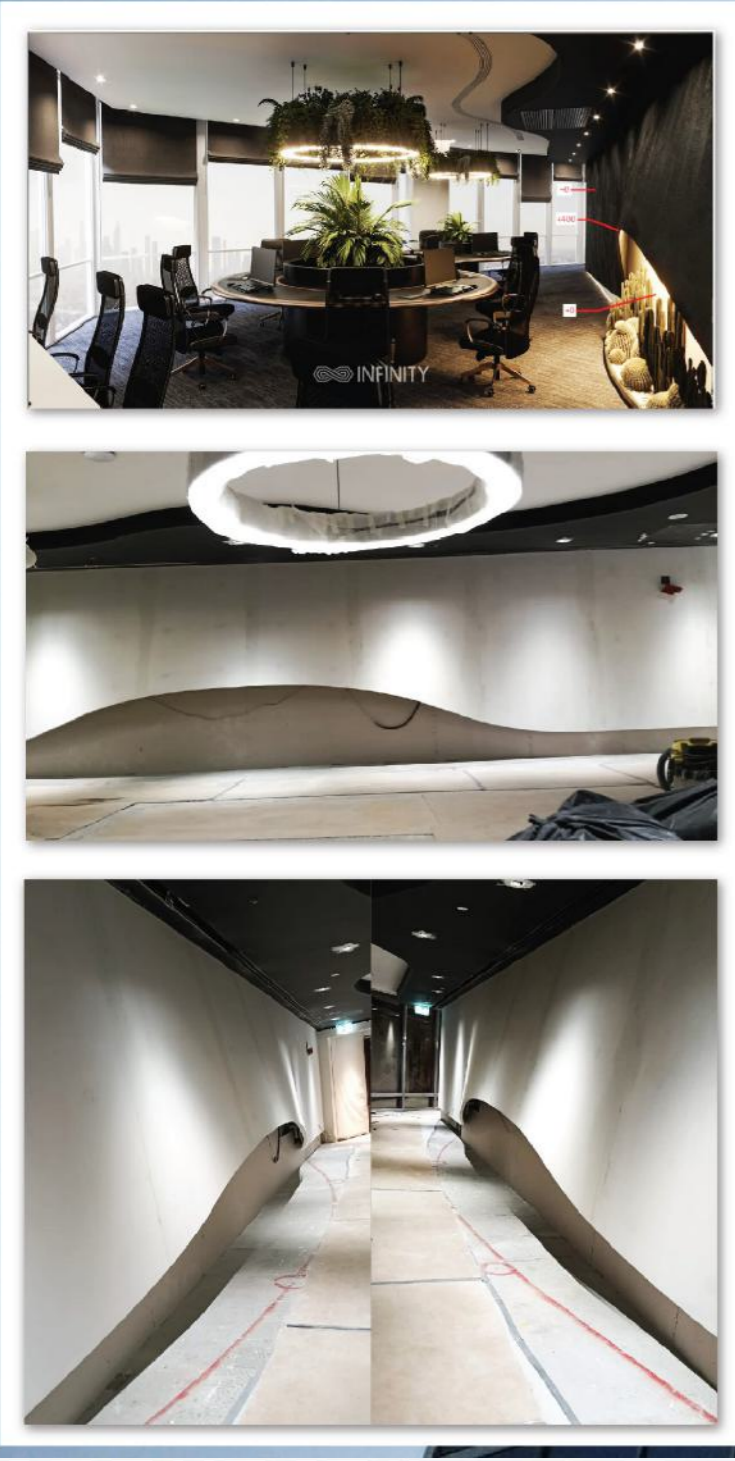
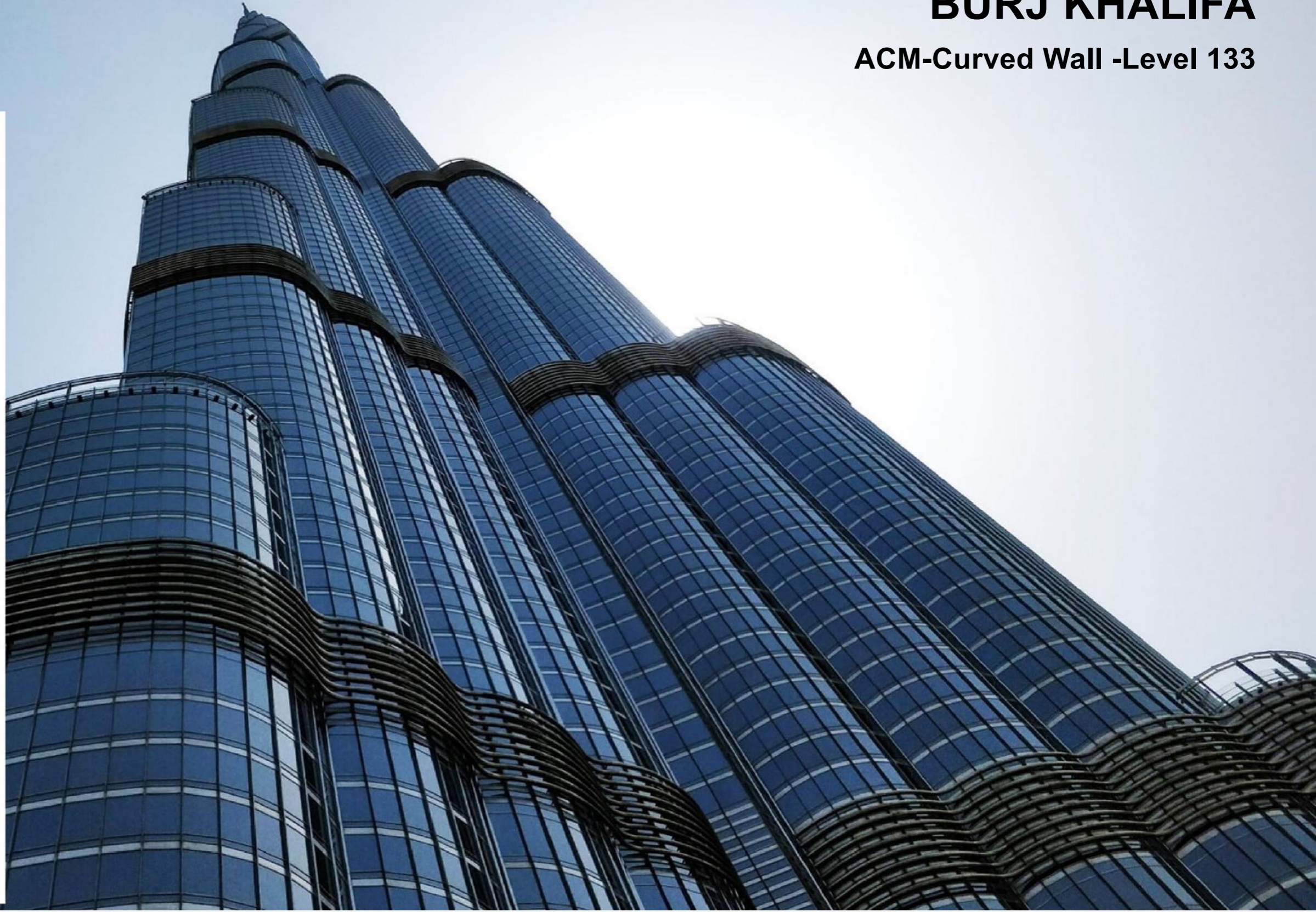


CONTRACTOR	PROJECT NAME	SCOPE OF WORK	PROJECT VALUE	COMPLATION YEAR
58. MIAMI CONT. LLC	COMMERCIAL RESIDENTIAL BDLG. PLOT 115104,SHARJAH	SUPPLY & APPLY OF GRC WORK	0.05 MILLION	2026
59. ENGINEERING PROPERTY DEVELOPMENT LLC	BUILDING PROJECT G+2P+8Typ+Hc,Al QASIMIA,SHARJAH	SUPPLY & APPLY OF GRC WORK	0.1 MILLION	2026
60. TAJ AL FNOUN TECHNICAL SERVICES LLC	VILLA PROJECT, Plot No 282-5719 at AL KHWANEEJ SECOND	SUPPLY & APPLY OF GRC WORK	0.1 MILLION	2026
61. AL WAHA BLDG. CONT.L.L.C	G+2 Bldg. Plot No - GOV-457-MULK-144, at Al Tay East, Al Suyoh Suburb,Sharjah	SUPPLY & APPLY OF GRC WORK	0.1 MILLION	2026
62. ARAB CRAFT CONTRACTING L.L.C	SAUDI GRC PLANTER POTS	ONLY SUPPLY OF GRC PLANTER POTS	0.2 MILLION	2026
63. JABL ALREHAB TECHNICAL SERVICES	DUBAI	GRP LADDER	0.02 MILLION	2026
64. LA MIDA CONT. L.L.C	VAL BY KASCO	SUPPLY & APPLY OF GRC WORK	0.7 MILLION	2026
65. NAT.CONT.& TRANSPORTS CO.LLC.SP	BRIDGE PROJECT AT DIBBA CITY, SHARJAH, UAE	SUPPLY & APPLY OF GRC WORK	0.4 MILLION	2026
65. NAT.CONT.& TRANSPORTS CO.LLC.SP	BRIDGE PROJECT AT DIBBA CITY, SHARJAH, UAE	SUPPLY & APPLY OF GRC WORK	0.4 MILLION	2026
66. ALI GHOLAMI VEGETABLES & FRUITS LLC	AG OFFICE RENOVATION DUBAI,UAE	SUPPY & APPLY OF GRC WORK	0.1 MILLION	2026

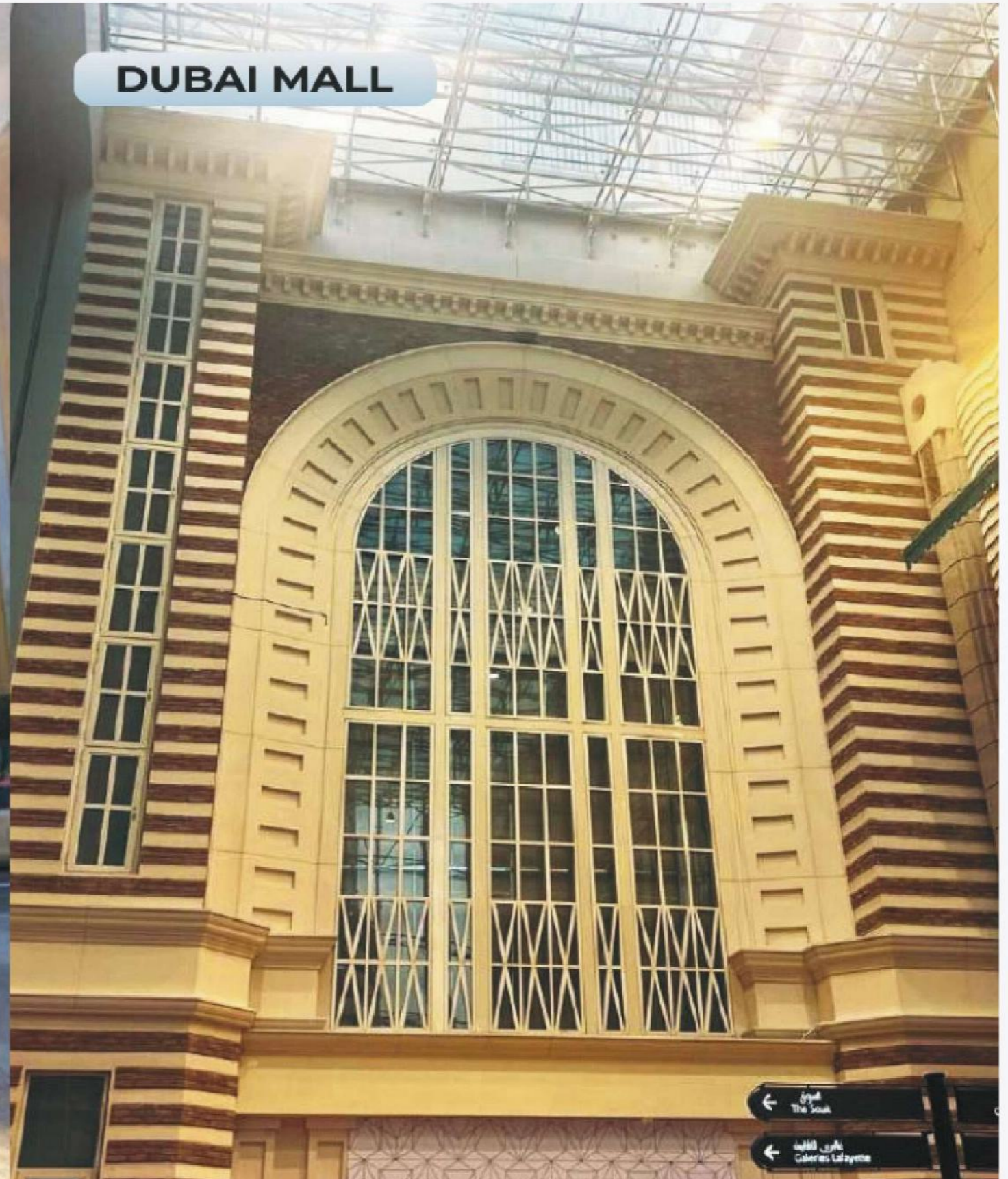
7. PHOTO OF COMPLETED & ON-GOING PROJECTS



BURJ KHALIFA
ACM-Curved Wall -Level 133



DUBAI MALL



AL WAHDA MALL

Only Fixing of GRC work



SELECT GROUP

The Peninsula @ Business Bay, Plot C, Dubai, UAE







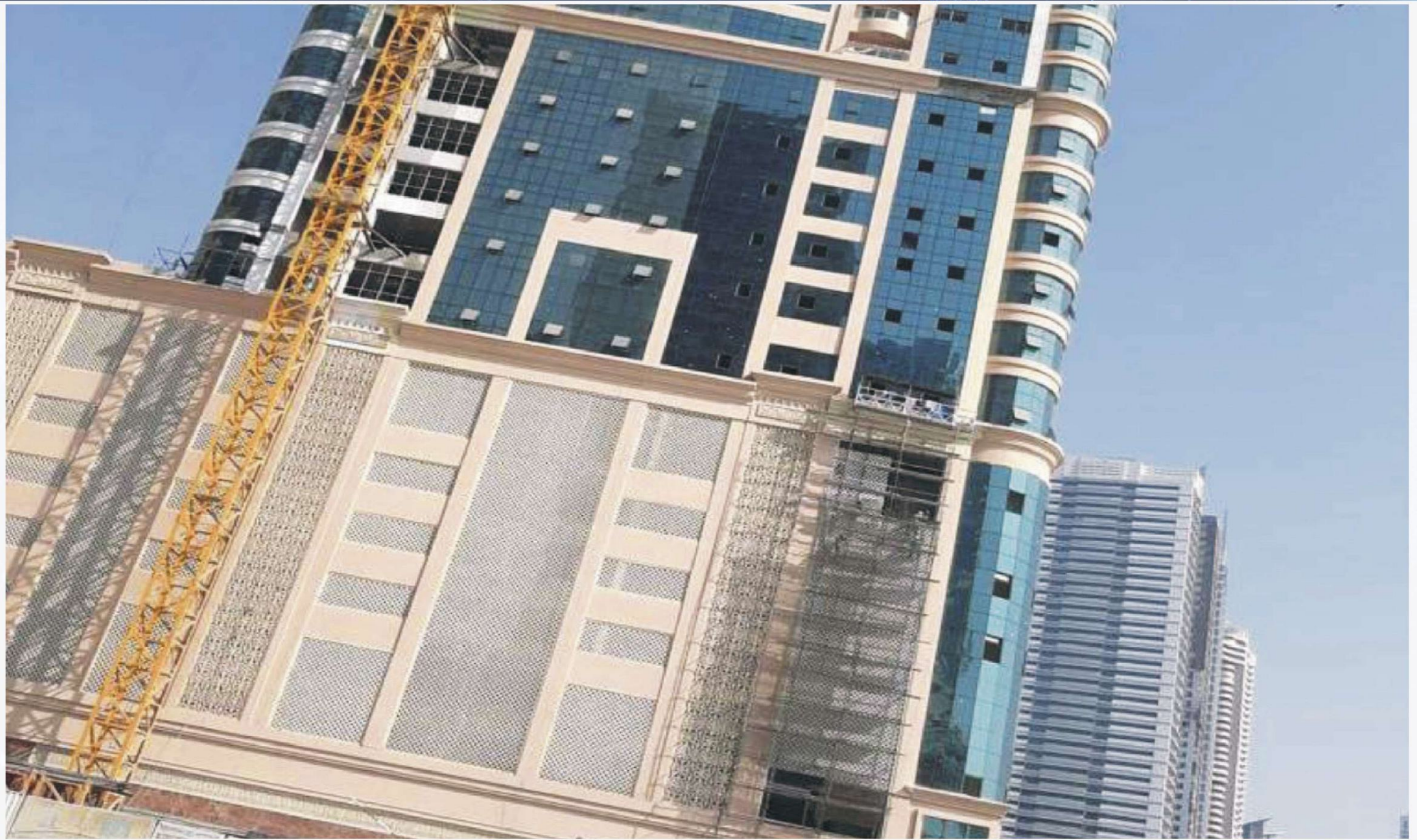
MARINA DUBAI

Only Fixing of GRC work



CORNICE TOWER, SHARJAH

Only Fixing of GRC work



GENERAL AUTHORITY FOR ISLAMIC AFFIARS & ENDOWMENTS

AWQAF BLDG. RESIDENSIAL G+2 pARKING + 10 TYP. FLRS, PLOT NO-511, AL SHUWEHEEN, SHARJAH



Tel: +971 6 573 7567 / E-mail: info@aljilanigr.com / G-mail: aljilanigr@gmail.com / www.aljilanigr.com

KASCO DEVELOPMENTS

VAL BY KASCO



DUBAI MUNICIPALITY

THUKHER CLUB & MOSQUE AT KHAWANEEJ PARK, DUBAI



NAGA
ARCHITECTS



DUBAI MUNICIPALITY

THUKHER CLUB & MOSQUE AT AL SAFA PARK, DUBAI



NAGA
ARCHITECTS



Tel: +971 6 573 7567 / E-mail: info@aljilanigrc.com / G-mail: aljilanigrc@gmail.com / www.aljilanigrc.com

EMAAR

GOLF LANE VILLAS, COMMUNITY CENTER AT EMMAR SOUTH DEVELOPMENT



Tel: +971 6 573 7567 / E-mail: info@aljilanigr.com / G-mail: aljilanigr@gmail.com / www.aljilanigr.com

EMAAR

FAIRWAY VILLAS, COMMUNITY CENTER AT EMMAR SOUTH DEVELOPMENT



Tel: +971 6 573 7567 / E-mail: info@aljilanigr.com / G-mail: aljilanigr@gmail.com / www.aljilanigr.com

DAMAC

DAMAC LAGOONS, MALTA-3



Tel: +971 6 573 7567 / E-mail: info@aljilanigr.com / G-mail: aljilanigr@gmail.com / www.aljilanigr.com

RESIDENTIAL BUILDING

MIRACLE GARDEN (ARJAN) Only Fixing of GRC work



Tel: +971 6 573 7567 / E-mail: info@aljilanigrc.com / G-mail: aljilanigrc@gmail.com / www.aljilanigrc.com

MAJID AL FUTTAIM

TILAL AL GHAF-AURA 1,2 & AURA GARDEN VILLAS, DUBAI



Tel: +971 6 573 7567 / E-mail: info@aljilanigr.com / G-mail: aljilanigr@gmail.com / www.aljilanigr.com

SON GROWS SYSTEMS LIMETED

JUMEIRAH BAY VILLA NO.LV 48, DUBAI



Tel: +971 6 573 7567 / E-mail: info@aljilanigr.com / G-mail: aljilanigr@gmail.com / www.aljilanigr.com

SOBHA HARTLAND DUBAI



Tel: +971 6 573 7567 / E-mail: info@aljilanigr.com / G-mail: aljilanigr@gmail.com / www.aljilanigr.com

Z99 FOR PROJECT MANAGEMENT SER.LLC

BARSHA PRIVATE VILLA



SHEIKH SAQR BIN MUHAMMAD BIN KHALID AL QASIMI

EXISTING VILLA G+1 UND.CONS. MAJLIS BLACK



BOUNDARY WALL





YAMAS INTERIOR FIT-OUT, HARBOUR, DUBAI



GRC PLANTER POTS



8. ISO CERTIFICATION



ISO 45001:2018



Certificate Of Registration

WRG Certifications hereby certifies that the Occupational Health & Safety Management System of

**MOHAMMAD AL JILANI FIBER GLASS CEMENT
PRODUCTS MANUFACTURING L.L.C. SP**

Mohammad Al Jilani Fiber Glass Cement, Al- Sajja, Al- Sajja, Sharjah,00000, Sharjah, U.A.E.

has been assessed and found to operate in compliance and meets the requirement of following standard

ISO 45001:2018

for the scope of

GRC & GRP Products.

Initial date of certification : Dec 25, 2024
Current date of certification : Dec 25, 2024
Date of expiry : Dec 24, 2027

(Subject to surveillance mark present)

1st Surveillance Date : Nov 2025



2nd Surveillance Date : Nov 2026



Certificate Number : OHS-MMXXIV-12-15273
NACE Code : DJ- 27.35

WRG Certifications

A.dphangal

Authorised Signatory



Registry Information can be found at: www.wrgcert.com/register



ISO 45001

This certificate remains the property of American International Accreditation Organization – Bureau of Accredited Registrars, (AIAO-BAR) & World Registrar Group Certification, (WRG Certifications). This certificate is valid for three years from the date of its issuance. Must be returned, if certificate is withdrawn. Compliance & Accreditation by AIAO-BAR. www.aiao-bar.org. Registration No – AIAO-BAR-0305131-1

ISO 14001:2015



Certificate Of Registration

WRG Certifications hereby certifies that the Environment Management System of:

**MOHAMMAD AL JILANI FIBER GLASS CEMENT
PRODUCTS MANUFACTURING L.L.C. SP**

Mohammad Al Jilani Fiber Glass Cement, Al- Sajja, Al- Sajja, Sharjah,00000, Sharjah, U.A.E.

has been assessed and found to operate in compliance and meets the requirement of following standard

ISO 14001:2015 (EMS)

for the scope of:

GRC & GRP Products.

Initial date of certification : Dec 25, 2024
Current date of certification : Dec 25, 2024
Date of expiry : Dec 24, 2027

(Subject to surveillance mark present)

1st Surveillance Date : Nov 2025



2nd Surveillance Date : Nov 2026



Certificate No. : EMS-MMXXIV-12-15272
NACE Code : DJ- 27.35

WRG Certifications

A.dphangal

Authorised Signatory



Registry Information can be found at: www.wrgcert.com/register



ISO 14001

This certificate remains the property of American International Accreditation Organization – Bureau of Accredited Registrars, (AIAO-BAR) & World Registrar Group Certification, (WRG Certifications). This certificate is valid for three years from the date of its issuance. Must be returned, if certificate is withdrawn. Compliance & Accreditation by AIAO-BAR. www.aiao-bar.org. Registration No – AIAO-BAR-0305131

ISO CERTIFICATION



Certificate Of Registration

WRG Certifications hereby certifies that the Quality Management System of:

MOHAMMAD AL JILANI FIBER GLASS CEMENT PRODUCTS MANUFACTURING L.L.C. SP

Mohammad Al Jilani Fiber Glass Cement, Al- Sajja, Al- Sajja, Sharjah,00000, Sharjah, U.A.E.

has been assessed and found to operate in compliance and meets the requirement of following standard

ISO 9001:2015

for the scope of

GRC & GRP Products.

Initial date of certification : Dec 25, 2024
Current date of certification : Dec 25, 2024
Date of expiry : Dec 24, 2027

(Subject to surveillance mark present)

1st Surveillance Date : Nov 2025



2nd Surveillance Date : Nov 2026



Certificate Number : QMS-MMXXIV-12-15271
NACE Code : DJ- 27.35

WRG Certifications
A.dpanghal
Authorised Signatory



Website: www.wrgcert.com, Email: wrgcert@gmail.com,

This certificate remains the property of American International Accreditation Organization – Bureau of Accredited Registrars, (AIAO-BAR) & World Registrar Group Certification, (WRG Certifications). This certificate is valid for three years from the date of its issuance. Must be returned, if certificate is withdrawn. Compliance & Accreditation by AIAO-BAR. www.aiao-bar.org. Registration No – AIAO-BAR-0305131-1



ISO 9001

9. COMPANY TRADE LICENSE



902862



رخصة صناعية Industrial License



License Details		تفاصيل الرخصة	
Issue Date	15-12-2023	تاريخ الإصدار	License No. 902862
Expiry Date	15-12-2026	تاريخ الإنتهاء	Registration No. 902728
محمد الجيلاني لصناعة الالياف الزجاجيه ذ.م.م.ش.و		الاسم التجاري	
Trade Name	MOHAMMAD AL JILANI FIBER GLASS CEMENT PRODUCTS MANUFACTURING L.L.C.SP		
Legal status	Individual Company L.L.C	شركة ذات مسؤولية محدودة - الشخص الواحد (ذ م م)	الشكل القانوني

License Members		أطراف الرخصة			
الحصص	الصفة	رقم الهوية / الجواز	الجنسية	اسم المستثمر	رقم المستثمر
Shares	Type	ID \ Passport No	Nationality	Investor Name	Investor No
100.0 %	المالك Owner	784197805075179	بنغلاديش BENGLADESH	محمد الجيلاني مولا عبدول حكيم مولا MOHAMMAD JILANI MOLLA ABDUL HAKIM MOLLA	4983205
		محمد الجيلاني مولا عبدول حكيم مولا		المدير	
		صناعة المنتجات الأسمنتية المقواة بالألياف الزجاجية		أنشطة الرخصة	
		الشارقة-الصجعة صناعية/الشارقة-- خلف شارع الإمارات مكتب-أرض مسورة ملك ملك كنوشة عوض سيف حميدي الكتبي		العنوان	
		البريد	0506853362	الهاتف المتحرك:	
		الموقع الإلكتروني:	الشارقة 0	صندوق البريد:	
		aljilanigr@gmail.com			



902862



شهادة سجل صناعية Industrial Register Certificate



License Details		تفاصيل الرخصة	
License No.	902862	رقم الرخصة	902862
Issue Date	15-12-2023	تاريخ الإصدار	Registration No. 902728
Expiry Date	15-12-2026	تاريخ الإنتهاء	15-12-2026
Capital	300000	رأس المال	300000
محمد الجيلاني لصناعة الالياف الزجاجيه ذ.م.م.ش.و		الاسم التجاري	
Trade Name	MOHAMMAD AL JILANI FIBER GLASS CEMENT PRODUCTS MANUFACTURING L.L.C.SP		
Legal status	Individual Company L.L.C	شركة ذات مسؤولية محدودة - الشخص الواحد (ذ م م)	الشكل القانوني
محمد الجيلاني مولا عبدول حكيم مولا		المدير	
صناعة المنتجات الأسمنتية المقواة بالألياف الزجاجية		أنشطة الرخصة	
الشارقة-الصجعة صناعية/الشارقة-- خلف شارع الإمارات مكتب-أرض مسورة ملك ملك كنوشة عوض سيف حميدي الكتبي		العنوان	



1 / 4



11-11-2025 : Printing Date / تاريخ الطباعة
39895 : User Name / رقم المستخدم

- This document is official. It doesn't need to be stamped or signed.
To view license details please visit SEDD web site: www.sedd.ae

- It is prohibited to distribute advertisements in public places and residential areas.
- A permit is required when conducting any promotion.

هذه الوثيقة رسمية ولا تحتاج لختم أو توقيع -
www.sedd.ae: للتأكد من صحة البيانات يرجى زيارة موقع الدائرة

- يمنع توزيع الإعلانات في الأماكن العامة والأحياء السكنية.
- يلزم استخراج تصريح عند إجراء أي عروض ترويجية.

www.sedd.ae 80080000



2 / 4



11-11-2025 : Printing Date / تاريخ الطباعة
39895 : User Name / رقم المستخدم

- This document is official. It doesn't need to be stamped or signed.
To view license details please visit SEDD web site: www.sedd.ae

- It is prohibited to distribute advertisements in public places and residential areas.
- A permit is required when conducting any promotion.

هذه الوثيقة رسمية ولا تحتاج لختم أو توقيع -
www.sedd.ae: للتأكد من صحة البيانات يرجى زيارة موقع الدائرة

- يمنع توزيع الإعلانات في الأماكن العامة والأحياء السكنية.
- يلزم استخراج تصريح عند إجراء أي عروض ترويجية.

www.sedd.ae 80080000

10. COMPANY VAT CERTIFICATION



الهيئة الاتحادية للضرائب
FEDERAL TAX AUTHORITY



شهادة التسجيل في ضريبة القيمة المضافة
أصدرت بموجب الصلاحية الممنوحة بموجب المادة (4) من المرسوم بقانون رقم (13) لسنة 2016 بشأن إنشاء الهيئة الاتحادية للضرائب

Certificate of Registration for Value Added Tax in the United Arab Emirates
Issued under the authority allocated by Art. 4 of the Federal Decree-Law No. 13 of 2016

The Federal Tax Authority certifies that the entity below is a registered person for Value Added Tax in the UAE	تشهد الهيئة الاتحادية للضرائب أن الجهة التالية مسجلة لضريبة القيمة المضافة في الإمارات العربية المتحدة	
Tax Registration Number	104254859200003	رقم التسجيل الضريبي
Legal Name of Entity (Arabic)	محمد الجيلاني لصناعة الالياف الزجاجية ذ.م.م.ش.و.	الاسم القانوني للكيان (باللغة العربية)
Legal Name of Entity (English)	MOHAMMAD AL JILANI FIBER GLASS CEMENT PRODUCTS MANUFACTURING L.L.C.SP	الاسم القانوني للكيان (باللغة الانجليزية)
The Registered Address and Contact Number	MOHAMMAD AL JILANI FIBER GLASS CEMENT, AL-SAJJA, AL-SAJJA, Sharjah, 00000, Sharjah +971506853362	العنوان المسجل ورقم التواصل
Effective Registration Date	01/04/2024	تاريخ التسجيل الفعلي
First VAT Return Period	01/04/2024 - 30/06/2024	فترة أول إقرار لضريبة القيمة المضافة
VAT Return due date	29/07/2024	تاريخ استحقاق الإقرار لضريبة القيمة المضافة
Start and end dates of Tax periods	1st Apr to 30th Jun, 1st Jul to 30th Sep, 1st Oct to 31st Dec, 1st Jan to 31st Mar	تواريخ بدء وانتهاء الفترات الضريبية
List of Main trade license, Sole Establishments and branches licenses details under the registered taxable person:	قائمة الرخصة التجارية الرئيسية والمؤسسات الفردية والفروع المندرجة ضمن التسجيل الضريبي:	

Legal Name	License Issuing Authority	License Number/رقم الرخصة	جهة الترخيص	الاسم القانوني
------------	---------------------------	---------------------------	-------------	----------------

يرجى التأكد من صحة تفاصيل الشهادة. يجب إبلاغ الهيئة الاتحادية للضرائب في حال تغيير الأسس التي حصلت فيها على رقم التسجيل الضريبي الخاص بك.*

*Please check that the details on this certificate are correct. You must inform the Federal Tax Authority of any change on the basis of which you obtained your Tax Registration Number.

Date of Issue 26/03/2024

تاريخ الاصدار



Version Number

2024/VAT/0000324962/001

رقم الإصدار

شهادة تسجيل لضريبة الشركات في الإمارات العربية المتحدة

Certificate of Registration for Corporate Tax in the United Arab Emirates
(as per Federal Decree-Law Number 47 of 2022 on the Taxation of Corporations and Businesses)

The Federal Tax Authority certifies that the entity below is a registered person for Corporate Tax in the UAE

تشهد الهيئة الاتحادية للضرائب أن الجهة التالية مسجلة لضريبة الشركات في الإمارات العربية المتحدة

Tax Registration Number	104254859200001	رقم التسجيل الضريبي
Legal Name of Person/Entity (Arabic)	محمد الجيلاني لصناعة الالياف الزجاجية ذ.م.م.ش.و.	الاسم القانوني للشخص / الكيان (باللغة العربية)
Legal Name of Person/Entity (English)	MOHAMMAD AL JILANI FIBER GLASS CEMENT PRODUCTS MANUFACTURING L.L.C.SP	الاسم القانوني للشخص / الكيان (باللغة الانجليزية)
Registered Address, and Contact Number	MOHAMMAD AL JILANI FIBER GLASS CEMENT, AL-SAJJA, AL-SAJJA, Sharjah, 00000, Sharjah +971506853362	العنوان المسجل ورقم التواصل
Effective Registration Date	15/12/2023	تاريخ التسجيل الفعلي
Corporate Tax Period		الفترة الضريبية للشركات
Corporate Tax Period	1 January - December	الفترة الضريبية للشركات
First Corporate Tax Period Start Date/تاريخ ابتداء الفترة الأولى لضريبة الشركات	01/01/2024	أول تاريخ استحقاق لتقديم الإقرار لضريبة الشركات
First Corporate Tax Period End Date/تاريخ انتهاء الفترة الأولى لضريبة الشركات	31/12/2024	أول تاريخ استحقاق لتقديم الإقرار لضريبة الشركات
First Corporate Tax Return Filing Due Date/تاريخ استحقاق تقديم الإقرار لضريبة الشركات	30/09/2025	يناير - ديسمبر

Date of Issue 18/05/2024

تاريخ الاصدار



Version Number

2024/CIT/0000414800/001

رقم الإصدار

11 ALL APPROVALS



The Employer EMAAR DUBAI SOUTH		The Engineer 		The Contractor GINCO	
Project: Emaar South - GB22 (Golf Lane) 574 Units - Main Works Dubai, UAE.					
From: M/s. Ginco General Contracting L.L.C			To: M/s. DAR Consulting Architect & Engineer		
Shop Drawing Submittal			Ref. No.: GGC-163-SHD-ARC-0057		
			REV: 1		
			Date: 17-Dec-25		
			Required By: Architectural		
			Division/section: Architectural		
S.No.	Drawing No.	Drawing Title		Revision	
1	ES-GB22-DAR-5B-S3-SD-057	5 BEDROOM S3 GRC ELEVATION & DETAILS		01	
Originator of Submittal:					
Contractor's Statement: We certify that the drawing(s) submitted herewith has(have) been reviewed in detail and in compliance with the Contract drawings and specifications except as otherwise stated here above.					
Contractor's PM: Signature & Date			Received By DAR Consult: Signature & Date		
<p>Review Status</p> <input type="checkbox"/> A. Approved <input checked="" type="checkbox"/> B. Approved As Noted <input type="checkbox"/> C. Approved As Noted, Resubmit <input type="checkbox"/> D. Not Approved, Resubmit <input type="checkbox"/> E. Held and Unchecked					
<p>Comments:</p> <p>* samples of Fallah with contractors as per enclosed S.O.</p> <p>* All the casters / G rods, size, distance and location are subjected to approved Design calculation.</p>					
Reviewer: Signature & Date		Electrical Engineer: Signature & Date		Mechanical Engineer: Signature & Date	
Resident Engineer: Signature & Date		Engineer's Representative: Signature & Date		Received by Contractor: Signature & Date	
<p>Corrections or comments made relative to submittals during this review do not relieve the Contractor from compliance with the Contract requirements and specifications. This check is only for review of general conformance with the design concept of the project and general compliance with the information given in the Contract documents. The Contractor is responsible for confirming and correlating all quantities and dimensions, selecting fabrication processes and techniques of construction, coordinating his Work with that of other trades and performing his Work in a safe and satisfactory manner.</p>					

* submit physical sample / m.s for GRC.

PROJECT NO. : 3B+G+3P+13F RESIDENTIAL BUILDING					
On plot No.3260916 at Jadaf waterfront -Dubai-U.A.E.					
CLIENT		CONSULTANT		CONTRACTOR	
KASCO REAL ESTATE DEV.		Bonyan Engineering Consultant		LAMIDA CONTRACTING LLC	
18/03/2026	PRE QUALIFICATION SUBMITTAL				REF NO
					LMC/VAL/PQ/GRC/01
Reference		Attachments		Material Submittal (use one sheet for one submittal)	
Specifications	B.O.Q No.	<input type="checkbox"/> Brochure <input type="checkbox"/> Catalogue <input type="checkbox"/> Guarantee <input type="checkbox"/> Samples <input type="checkbox"/> Reports		<p align="center">Glass Reinforcement Concrete</p> <p align="center">Brand:</p> <p align="center">By: M/s Mohammed al Jilani Fiber Glass Cement Products manufacturing LLc.sp</p>	
Use					
For purpose	At place				
For Partition Walls	All Floors				
Alternative proposal		Specified material			
Material	Reason				
Consultant's receipt stamp & sign		Approval requested by (18/03/2026)		Contractor's stamp date & sign	
Approved		Approved subject to comments		Rejected	
<p>Comments</p> <p>Pre qualified Vendor, subject to Project specifications and Final material submittal approval.</p>					
Sign & date (Consultant)		sign & stamp (E.P Representative)		sign upon fixing ** (Project Engineer)	

23/3/2026



ALL APPROVALS



PROJECT NO. : 3B+G+3P+13F RESIDENTIAL BUILDING On plot No.3260916 at Jadaf waterfront -Dubai-U.A.E.					
CLIENT		CONSULTANT		CONTRACTOR	
KASCO REAL ESTATE DEV.		Bonyan Engineering Consultant		LAMIDA CONTRACTING LLC	
18/03/2026	MATERIAL SUBMITTAL			REF NO	
	CIVIL			LMC/VAL/MS/GRC/01	
Reference		Attachments		Material Submittal (use one sheet for one submittal)	
Specifications	B.O.Q No.	() Brochure () Catalogue () Guarantee () Samples () Reports		Glass Reinforcement Concrete Brand: By: M/s Mohammed al Jilani Fiber Glass Cement Products manufacturing LLC.sp	
Use		Specified material			
For purpose	At place				
For Partition Walls	All Floors				
Alternative proposal					
Material	Reason				
Consultant's receipt stamp & sign		Approval requested by (18/03/2026)		Contractor's stamp date & sign	
For consultant's use					
Approved		<input checked="" type="checkbox"/> Approved subject to comments		Rejected	
Comments					
Material must comply with Project specification.					
- samples to be approved before bulk supply.					
Sign & date (Consultant)		sign & stamp (E.P Representative)		sign upon fixing ** (Project Engineer)	

23/3/2026












SHOP DRAWING SUBMITTAL																																																																	
				DATE: 26/03/2026																																																													
PROJECT NAME: (1B+G+3P+13+R) Residential Building on Plot No. 3260916 Jaddaf, Dubai																																																																	
ENGINEER: Eng. omar -Resident Engineer																																																																	
To: ENGINEER				Ref: LMC/VAL/SD/GRC/001																																																													
Submittal Status: <input type="checkbox"/> 1 st Submittal <input checked="" type="checkbox"/> Re-Submittal (Specify.....)																																																																	
<input type="checkbox"/> Architectural <input type="checkbox"/> Structural <input type="checkbox"/> MEP <input type="checkbox"/> Other (Specify.....)																																																																	
SHOP DRAWINGS FOR GRC																																																																	
Subject:																																																																	
B.O.Q.Item/ Specs:																																																																	
Others (Specify):																																																																	
<table border="1"> <thead> <tr> <th>Drawing No.</th> <th>Rev</th> <th>Issue</th> <th>Date</th> <th>Copies</th> <th>Description</th> </tr> </thead> <tbody> <tr> <td>AJFG-SD-011-107</td> <td>0</td> <td>25/03/2026</td> <td></td> <td>1</td> <td>2nd floor GRC facia Layout</td> </tr> <tr> <td>AJFG-SD-011-108</td> <td>0</td> <td>25/03/2026</td> <td></td> <td>1</td> <td>3rd floor GRC facia Layout</td> </tr> <tr> <td>AJFG-SD-011-109</td> <td>0</td> <td>25/03/2026</td> <td></td> <td>1</td> <td>Roof Floor GRC Layout</td> </tr> <tr> <td>AJFG-SD-011-201</td> <td>0</td> <td>25/03/2026</td> <td></td> <td>1</td> <td>Elevation -01</td> </tr> <tr> <td>AJFG-SD-011-202</td> <td>0</td> <td>25/03/2026</td> <td></td> <td>1</td> <td>Elevation -02</td> </tr> <tr> <td>AJFG-SD-011-203</td> <td>0</td> <td>25/03/2026</td> <td></td> <td>1</td> <td>Elevation -03</td> </tr> <tr> <td>AJFG-SD-011-301</td> <td>0</td> <td>25/03/2026</td> <td></td> <td>1</td> <td>section -AA</td> </tr> <tr> <td>AJFG-SD-011-302</td> <td>0</td> <td>25/03/2026</td> <td></td> <td>1</td> <td>section -BB</td> </tr> <tr> <td>AJFG-SD-011-400</td> <td>0</td> <td>25/03/2026</td> <td></td> <td>1</td> <td>GRC Details</td> </tr> </tbody> </table>						Drawing No.	Rev	Issue	Date	Copies	Description	AJFG-SD-011-107	0	25/03/2026		1	2nd floor GRC facia Layout	AJFG-SD-011-108	0	25/03/2026		1	3rd floor GRC facia Layout	AJFG-SD-011-109	0	25/03/2026		1	Roof Floor GRC Layout	AJFG-SD-011-201	0	25/03/2026		1	Elevation -01	AJFG-SD-011-202	0	25/03/2026		1	Elevation -02	AJFG-SD-011-203	0	25/03/2026		1	Elevation -03	AJFG-SD-011-301	0	25/03/2026		1	section -AA	AJFG-SD-011-302	0	25/03/2026		1	section -BB	AJFG-SD-011-400	0	25/03/2026		1	GRC Details
Drawing No.	Rev	Issue	Date	Copies	Description																																																												
AJFG-SD-011-107	0	25/03/2026		1	2nd floor GRC facia Layout																																																												
AJFG-SD-011-108	0	25/03/2026		1	3rd floor GRC facia Layout																																																												
AJFG-SD-011-109	0	25/03/2026		1	Roof Floor GRC Layout																																																												
AJFG-SD-011-201	0	25/03/2026		1	Elevation -01																																																												
AJFG-SD-011-202	0	25/03/2026		1	Elevation -02																																																												
AJFG-SD-011-203	0	25/03/2026		1	Elevation -03																																																												
AJFG-SD-011-301	0	25/03/2026		1	section -AA																																																												
AJFG-SD-011-302	0	25/03/2026		1	section -BB																																																												
AJFG-SD-011-400	0	25/03/2026		1	GRC Details																																																												
Shop drawings are submitted for your review/ approval																																																																	
Contractor's Rep:		Signature:		Date:																																																													
ENGINEER'S COMMENTS																																																																	
ENGINEER'S COMMENTS -All dimension shall be verified onsite prior to fabrication -Fixing details and anchorage system shall be as per approved structural calculations. -Material specifications and finishes shall match the approved samples.																																																																	
Checked:		Signature:		Date:																																																													
				only for approval																																																													
The afore mentioned shop drawing has been:																																																																	
<input type="checkbox"/> A Approved as Submitted		<input checked="" type="checkbox"/> B Approved as Noted Incorporate & Proceed		<input type="checkbox"/> C Revise & Re-Submit before work proceeds																																																													
				<input type="checkbox"/> D Rejected																																																													
Received by Contractor (Please sign below. Retain Original & Return Copy)																																																																	
Name:		Signature:		Date:																																																													
				also need stamp																																																													

* The CONTRACTOR shall not proceed with the relevant WORKS if any cost or time implication is involved, UNLESS relevant notification pursuant to Clause 51.2 & 52.2 of the conditions of contract is submitted by the Contractor followed by WRITTEN instruction by the ENGINEER to proceed with the subject works.

ALL APPROVALS



Material Submittal				
511	Ref. No	MS-C-21	Rev. No	0
Project Name:		U/C – G+2P+10Typ		
Location:		Plot No – 293, Mulk No – 511, Area – Gharb, Al Shuweheen, Sharjah, UAE		
Client:		GENERAL AUTHORITY FOR ISLAMIC AFFAIRS & ENDOWMENTS		
Consultant:		ROWAAD AL TASMEEM ENGINEERING CONSULTANT		
Main Contractor:		AL SERH AL KABEER CONSTRUCTION		
Date of Submission		12-February-2026		
Division	Civil <input checked="" type="checkbox"/>	GRC Works <input type="checkbox"/>	MEP <input type="checkbox"/>	Gen <input type="checkbox"/>
Material Name	GRC Materials			
Manufacturer	Mohammad Al Jilani Fiber Glass			
Sub-contractor/Supplier	Mohammad Al Jilani Fiber Glass			
Attachments	Catalogue <input type="checkbox"/> Samples <input type="checkbox"/> Data Sheet <input type="checkbox"/> Document <input checked="" type="checkbox"/>			
Main Contractor	 ASAK AL SERH AL KABEER CONSTRUCTION LLC		Sub-contractor (if any):	
E-MAILED				
UNDERNEATH TO BE FILLED BY CONSULTANT				
Comments: <i>Follow P. Qualification Submittal comments</i>				
Stamp & Signature	16-2-2026	Approved <input type="checkbox"/>	Approved As Noted <input checked="" type="checkbox"/>	Rejected/Resubmit <input type="checkbox"/>
				Received by Main Contractor on 17-Feb-2026

				
SHOP DRAWING SUBMITTAL TRANSMITTAL SHEET NO. 137				SPM/PA/STS/001/00
Project Name	1,127 Villas and Town Houses at "Malta" Cluster at "Damac Lagoons" Master Development, Hessa Street, Dubai, UAE		Project No.	P158.16
			Date	19/07/2024
Submittal No.:	P158.16_DWG_ARCH-0137	Rev. No.	00	
Submittal Title:	Shop Drawings for GRC Works 4D-M			
We are sending herewith under separate cover the drawings / documents / samples listed below:				
S/No.	Drawing Ref. No	Description	Rev.	Status
01	P158.16-DAM-GIN-AL JILANI-GRC-SD-01	GROUND FLOOR & FIRST FLOOR PLAN (as per attached list)	00	B
TYPE: SD= Shop Drawings, SM= Sample, GT= Guarantee, MD= Manufacturer's Data, CT= Certificates, TT= Test Results, OT= Other				
Supplier / Manufacturer:		AL JILANI FIBER GLASS CEMENT PRODUCTS MANUFACTURING LLC. SP		
We certify that the documents / materials submitted herewith have been reviewed in detail and are in strict conformance with the contract drawings and specifications except as otherwise stated.				
Contractor Name:	Eng. Mohammed Salah	Signature:	Received By Consultant:	
Sr. Project Manager		Date: 19/07/2024	Date:	19 JUL 2024
Engineer's Review Comments		Consultant's Decision		
<ul style="list-style-type: none"> Site measurements to be taken prior fabrication All typical GRC moulding samples to match already installed GRC items at site. Ensure all work of installation and inspection comments are complied. All items to be as per approved materials All fixation to be done by SS-316 L grade All fixation structural calculation to be 		<input type="checkbox"/> [A] Approved Work may proceed <input checked="" type="checkbox"/> [B] Approved As Noted Work may proceed, but Resubmit <input type="checkbox"/> [C] Not Approved Work may not proceed, Revise and Resubmit <input type="checkbox"/> [D] Not Required For Information Only		
Consultant:	M/s ECCE	Signature:		
		Date:		
Contractor:	M/s GINCO	Signature:	Received By Contractor:	
		Date:	Date:	04 AUG 2024
Corrections or comments made relative to submittals during this review do not relieve the contractor from compliance with the requirements of the Contract. This check is only for review of general conformance with the design concept of the project and general conformance with the information given in the contract documents. The contractor is responsible for confirming and correlating all quantities and dimensions, selecting fabrication processes and techniques of construction, coordinating his work with that of other trades and performing his work in a safe and satisfactory manner.				
Copy to: Damac <input type="checkbox"/> Project Managers <input type="checkbox"/> QS <input type="checkbox"/> Project Managers <input type="checkbox"/> Office <input type="checkbox"/>				
Sheet No. _____ of _____				
Submitted considering all load combinations including windloads. Ensure all visual elements are looking same between different subcontractors installed GRC items. No visual difference/disparity. M/s GINCO to ensure the same.				

ALL APPROVALS



DAMAC



Form No.: SPM/PASTB00200

SUBMITTAL TRANSMITTAL SHEET NO. 0117

Project Name	1,127 Villas and Town Houses at "Malta" Cluster at "Damac Lagoons" Master Development, Hessa Street, Dubai, UAE	Project No.	P158.16
Date	25/07/2024	SITE: C-151	

Submittal No.:	P158.16 MAT ARC-0117	Revision:	01 RECEIVED
Submittal Title:	Material Submittal for GRC Work		

We are sending herewith under separate cover the drawings / documents / samples listed below:

ITEM NO.	DWGS. SPECS BOQ REF.	DESCRIPTION	TYPE	COPIES	REMARKS
1		Material Submittal for GRC Work	MAT	02 Hard + 01 Soft Copy	

TYPE: SD= Shop Drawings, SM= Sample, GT= Guarantee, MD=Manufacturer's Data, CT= Certificates, TT= Test Results, OT= Other

Supplier / Manufacturer: **M/s. Al Jilani Fiber Glass Cement Products Manufacturing LLC SP**

We certify that the documents / materials submitted herewith have been reviewed in detail and are in strict conformance with the contract drawings and specifications except as otherwise stated.

Contractor:	Signature:	Received By:	Date:
Eng. Mohammed Salah Sr. Project Manager			25 JUL 2024

Resident Engineer Review Comments

<ul style="list-style-type: none"> Design of GRC Structure is responsibility of contractor Trial Mix to be done before fabrication Comply with Local Authority Regulation Subject to Mockup approval prior to start the work Swatch test to be done for GRC Reinforcement 	<p>Consultant Decision</p> <p><input type="checkbox"/> [A] Approved Work may proceed</p> <p><input checked="" type="checkbox"/> [B] Approved As Noted Work may proceed, but Resubmit</p> <p><input type="checkbox"/> [C] Not Approved Work may not proceed, Revise and Resubmit</p> <p><input type="checkbox"/> [D] Not Required For Information Only</p>
--	--

Consultant:	Signature:	Received By:	Date:
M/s ECCE			08 AUG 2024

Corrections or comments made relative to submittals during this review do not relieve the contractor from compliance with the requirements of the Contract. This check is only for review of general conformance with the design concept of the project and general compliance with the information given in the contract documents. The contractor is responsible for confirming and correlating all quantities and dimensions, selecting fabrication processes and techniques of construction, coordinating his work with that of other trades and performing his work in a safe and satisfactory manner.

Copy to:

Employer Head Office Consultant QS Other

MATERIAL STATEMENT OF FABRICATION AND INSTALLATION TO BE SUBMITTED

Relevant warranty/guaranty to be as per project Document deemed necessary.

DAMAC



Form No.: SPM/PA/STS/001/01

PREQUALIFICATION SUBMITTAL TRANSMITTAL SHEET # 0079

Project Name	1,127 Villas and Town Houses at "Malta" Cluster at "Damac Lagoons" Master Development, Hessa Street, Dubai, UAE	Project No.	P158.16
Date	12/06/2024	SITE: C-151	

Submittal No.:	P158.16 PQN CIV-0079	Revision:	00 RECEIVED
Submittal Title:	Prequalification for GRC Work		

We are sending herewith under separate cover the drawings / documents / samples listed below:

ITEM NO.	DWGS. SPECS BOQ REF.	DESCRIPTION	TYPE	COPIES	REMARKS
1		Prequalification for GRC Work	PQN	02 Hard + 01 Soft Copy	

TYPE: SD= Shop Drawings, SM= Sample, GT= Guarantee, MD=Manufacturer's Data, CT= Certificates, TT= Test Results, OT= Other

Supplier / Manufacturer: **M/s. Mohammad Al Jilani Fiber Glass**

We certify that the documents / materials submitted herewith have been reviewed in detail and are in strict conformance with the contract drawings and specifications except as otherwise stated.

Contractor:	Signature:	Received By:	Date:
Eng. Mohammed Salah Sr. Project Manager			12 JUN 2024

Resident Engineer Review Comments

<p>NO OBJECTION BASED ON THE DOCUMENTS PROVIDED. CONTRACTOR FURTHER EVALUATE THEIR CAPACITY TO TIMELY DELIVERY, INSTALLATION & COMPLETION WITH REQUIRED QUALITY. TESTING FOR STRUCTURAL INTEGRITY TO BE DONE UPON DELIVERY - ARRANGE THE MATERIAL SUBMITTAL SUBJECT TO SATISFACTORY MOCKUP APPROVAL PRIOR PROCEEDING THE WORK TO 10/6/2024</p>	<p>Consultant Decision</p> <p><input type="checkbox"/> [A] Approved Work may proceed</p> <p><input checked="" type="checkbox"/> [B] Approved As Noted Work may proceed, but Resubmit</p> <p><input type="checkbox"/> [C] Not Approved Work may not proceed, Revise and Resubmit</p> <p><input type="checkbox"/> [D] Not Required For Information Only</p>
--	--

Consultant:	Signature:	Received By:	Date:
M/s ECCE			26 JUN 2024

Corrections or comments made relative to submittals during this review do not relieve the contractor from compliance with the requirements of the Contract. This check is only for review of general conformance with the design concept of the project and general compliance with the information given in the contract documents. The contractor is responsible for confirming and correlating all quantities and dimensions, selecting fabrication processes and techniques of construction, coordinating his work with that of other trades and performing his work in a safe and satisfactory manner.

Copy to:

Employer Head Office Consultant QS Other

PRODUCT/INSTALLATION SHALL MEET PROJECT DOCUMENTS

RELEVANT WARRANTY/GUARANTEE APPLIES AS PER PROJECT DOCUMENTS

Rev. Date 11/01/2017

ALL APPROVALS



REQUEST FOR SUBCONTRACTOR'S APPROVAL													
PROJECT NAME: Security Inspection Department K9 (P-301)													
DOCUMENT CODE	PROJECT #	DOCUMENT TYPE	TRADE CODE	RUNNING NUMBER	REV.	DATE	AUTHOR						
	P-301	PQS	AR	P-301-SID-PQS-AR-0035	00	27/02/2026	SPM						
ISSUED BY: FREIBURG CONTRACTING & GENERAL Maintenance LLC				TO: KHATIB & ALAMI (CEC)									
Subcontractor Submitted for Approval		Specialty	Specifications Approved Subcontractors										
Pre-Qualification for GRC Panel (Ms. Mohammad Al Jilani Fiber Glass)		GRC Panel Works											
Submitted For:				Trade:									
Attachments: <table border="0" style="width: 100%;"> <tr> <td><input checked="" type="checkbox"/> Company Profile</td> <td><input type="checkbox"/> Authentic Licensing</td> </tr> <tr> <td><input checked="" type="checkbox"/> Organization Chart</td> <td><input type="checkbox"/> Others</td> </tr> <tr> <td><input type="checkbox"/> Delegated Personnel / CV's</td> <td></td> </tr> </table>								<input checked="" type="checkbox"/> Company Profile	<input type="checkbox"/> Authentic Licensing	<input checked="" type="checkbox"/> Organization Chart	<input type="checkbox"/> Others	<input type="checkbox"/> Delegated Personnel / CV's	
<input checked="" type="checkbox"/> Company Profile	<input type="checkbox"/> Authentic Licensing												
<input checked="" type="checkbox"/> Organization Chart	<input type="checkbox"/> Others												
<input type="checkbox"/> Delegated Personnel / CV's													
CONTRACTOR'S SIGNATURE:				RECIPIENT'S SIGNATURE:									
The Engineer's comments:													
<input type="checkbox"/> Approved <input checked="" type="checkbox"/> Approved As Noted <input type="checkbox"/> Revise & Resubmit <input type="checkbox"/> Rejected													
Engineer Representative				SIGNATURE:		DATE:							
The Client Representative's comments:													
<input type="checkbox"/> Approved <input type="checkbox"/> Approved As Noted <input type="checkbox"/> Revise & Resubmit <input type="checkbox"/> Rejected													
Client Representative				SIGNATURE:		DATE:							

Prequalification Submittal				
511	Ref. No	SCS-C-16	Rev. No	0
Project Name:	U/C – G+2P+10Typ			
Location:	Plot No – 293, Mulk No – 511, Area – Gharb, Al Shuweheen, Sharjah, UAE			
Client:	GENERAL AUTHORITY FOR ISLAMIC AFFAIRS & ENDOWMENTS			
Consultant:	ROWAAD AL TASMEEM ENGINEERING CONSULTANT			
Main Contractor:	AL SERH AL KABEER CONSTRUCTION			
Date of Submission		06-February-2026		
Division	Civil <input checked="" type="checkbox"/>	MEP <input type="checkbox"/>	Gen <input type="checkbox"/>	
Sub-contractor / Supplier	Mohammad Al Jilani Fiber Glass (For GRC works)			
Attachments	Catalogue <input type="checkbox"/> Prequalification <input checked="" type="checkbox"/> Document <input checked="" type="checkbox"/>			
Main Contractor			Sub-contractor (if any):	
		E-MAILED		
UNDERNEATH TO BE FILLED BY CONSULTANT				
Comments:				
<i>Must submit Method of Statement and lift design</i>				
<i>Shop drawings Plans submittal</i>				
<i>Make Mock-up - get site</i>				
<i>Submit undertaken letter - Warranty 10 years</i>				
Stamp & Signature 16-2-2026		Approved <input type="checkbox"/>		Received by Main Contractor
		Approved As Noted <input checked="" type="checkbox"/>		On: 17-Feb-2026
		Rejected/Resubmit <input type="checkbox"/>		

ALL APPROVALS



SHOP DRAWING SUBMITTAL No.		DATE	
		19/02/2026	
PROJECT NAME: Proposed Building (G+2P+8TYP+HC) Plot No. 126			
PROJECT No : 3519			
To: ENGINEER: Mohammed Ramadan			
Submittal Status: <input checked="" type="checkbox"/> 1st Submittal <input type="checkbox"/> Re-Submittal (Specify.....)			
Subject: GRC Shop Drawing			
B.O.Q.Item/ Specs:			
Others (Specify):			
Drawing Nos.	Rev	Issue	Date
1-7	0		19/02/2026
	0		
	0		
	0		
Shop drawings are submitted for your review/ approval			
Contractor's Rep: Eng. Abdalla		Signature:	
		Date: 19/02/2026	
ENGINEER'S COMMENTS			
ENGINEER'S COMMENTS			
With reference to the submitted GRC (Glass Reinforced Concrete) shop drawings for the above-mentioned project, and after reviewing the drawings and accompanying documents, please be informed that the drawings are provisionally approved, subject to full compliance with the following comments and conditions:			
Strict compliance with the approved project specifications and all applicable UAE and international standards.			
Ensure full coordination of the drawings with all other engineering disciplines (civil, electrical, mechanical) to avoid any conflicts during installation.			
Adherence to the dimensions, measurements, and fixing systems as shown in the approved drawings.			
Submission and approval of full-scale mock-ups for all shapes, finishes, and colors prior to mass production.			
Use of approved and verified materials as specified in the drawings and specifications.			
All metal fixing elements (anchors/fixings) must be corrosion-resistant (hot-dip galvanized or stainless steel). Submission of a detailed Method Statement covering manufacturing, transportation, storage, and site installation.			
Compliance with the approved Inspection and Test Plan (ITP), including flexural strength, tensile strength, water absorption, and weather resistance tests.			
Ensure no hairline cracks or color variation; any non-compliant elements must be replaced immediately.			
Full compliance with Health, Safety, and Environmental (HSE) requirements during manufacturing, transport, and installation.			
Coordination with the site supervision team to prevent interference with other works (walls, ceilings, electrical installations).			
Any modification to the drawings, dimensions, fixing system, or materials requires prior written approval from the Consultant.			
Submission of Certificates of Conformity for all materials and components prior to installation. Provision of manufacturer's warranty and workmanship guarantee against defects, in accordance with the contract and approved specifications.			
Checked :	Signature:	Date:	19-2-2026
Engineer's Rep/ Assistant:	Signature:	Date:	
The afore mentioned shop drawing has been:			
<input type="checkbox"/> A	<input type="checkbox"/> B	<input type="checkbox"/> C	<input type="checkbox"/> D
Approved as Submitted	Approved as Noted Incorporate & Proceed	Revise & Re-Submit before work proceeds	Rejected
Received by Contractor (Please sign below. Retain Original & Return Copy)			
Name:		Date:	

* The CONTRACTOR shall not proceed with the relevant WORKS if any cost or time implication is involved, UNLESS relevant notification pursuant to Clause 51.2 & 52.2 of the conditions of contract is submitted by the Contractor followed by WRITTEN instruction by the ENGINEER to proceed with the subject works.

Jacobs		National Contracting	
SHOP DRAWING SUBMITTAL			
Project / Contract Title : R910/B - Bridge to Al-Hisa Island		Contractor's Contract # R910/B	
Contractor : National Contracting & Transport Co. LLC		Client : Sharjah Roads & Transport Authorities (SRTA)	
Ref. SDS-098 Rev. 01		DATE : 21.02.2026	
To: Attention:	Mr. Arshad Hanif - Resident Engineer	Submitted for:	
Address:	Jacobs/HIP	<input type="checkbox"/> As requested	
Email ID:	Arshad.Hanif@jacobs.com	<input type="checkbox"/> For Information / Record	
Phone #:	050 537 6368	<input type="checkbox"/> For Review / Comments	
Fax #:		<input type="checkbox"/> For Approval	
		<input type="checkbox"/> For necessary action	
Shipment Method: [By email / EDMS/ Hand Delivery / Courier]		Confidentiality: [Yes/No]	
Document Type: Shop Drawing		Previous Submittal Ref:	
Discipline: [] Civil [] Mechanical [] Electrical [] Plumbing [] Other			
SR.	Drawing No.	Description	Rev. Copies Remarks Approval Code (For consultant use)
1	AJFM-SD-0435-R910B-01	BRIDGE RB2, PLAN & ELEVATION	1 1
2	AJFM-SD-0435-R910B-02	BRIDGE RB2, SECTION A, B & C	1 1
3	AJFM-SD-0435-R910B-03	BRIDGE RB2, GRC BLUSTERED AND PEDESTAL PLAN, ELEVATION & SECTION	1 1
4	AJFM-SD-0435-R910B-04	BRIDGE RB2, GRC BLUSTERED AND PEDESTAL PLAN, ELEVATION & SECTION	1 1
5	AJFM-SD-0435-R910B-05	BRIDGE RB2, GRC BLUSTERED AND PEDESTAL PLAN, ELEVATION & SECTION	1 1
6	AJFM-SD-0435-R910B-06	BRIDGE RB2, GRC BLUSTERED AND PEDESTAL PLAN, ELEVATION & SECTION	0 1
Name: Eng. Qamar Fares		Designation: Project Manager	
For Consultant Use		Signature:	
		Date: 21.02.2026	
<input type="checkbox"/> Approved		<input checked="" type="checkbox"/> Approved subject to comments	
		<input type="checkbox"/> Revise and Re-submit before proceeding	
		<input type="checkbox"/> Rejected	
Comments:			
Please refer comments noted on drawings.			
Project : R910B			
21 FEB 2026			
RECEIVED			
Sign:			
Review and approval are only for general conformance with the concept of the project and general compliance with the information provided in the contract documents. Contractor, and his Subcontractor / Supplier, remains responsible for compliance with contract documents, construction and coordination of quantities and dimensions, selection of fabrication process and techniques, coordination of trades, and performance of his work in a safe and satisfactory manner.			
* Use Submittal Review sheet to track the closure of critical comments. Use legible handwriting.			
Name: Arshad Hanif		Designation: Resident Engineer	
		Signature:	
		Date: 24.02.2026	

ALL APPROVALS



PROJECT NO : 3519 ON PLOT NO. 126 MULK GOV. NO.92											
CONTRACTOR AL INJAZAT AL HANDASY BLDG. CON		CONSULTANT NEXT ENGINEERING CONSULTANTS									
CLIENT MR. AHMED MOHAMED MARZOUQ SAQER ALMAZROI											
DATE 15/01/2025	Subcontractor/Supplier Pre-Qualifications		REF NO SS / NEC / 008								
<table border="1"> <tr> <th>Reference</th> <th>Attachments</th> <th>Material</th> </tr> <tr> <td> Specifications B.O.Q Bill No. 7B-D Use For purpose At place Suppling and fixing of decorative GRC Alternative proposal Reason Material </td> <td> (x) Catalogue (X) Previous Works (X) Certificates (x) Pre-Qualification Specified material </td> <td> Decorative GRC (Mohammad Al Jilani Fiber Glass Cement Products Manufacturing L.L.C) </td> </tr> <tr> <td> Consultant's receipt date & sign </td> <td> Approval requested by (date) </td> <td> Contractor's stamp & sign </td> </tr> </table>	Reference	Attachments	Material	Specifications B.O.Q Bill No. 7B-D Use For purpose At place Suppling and fixing of decorative GRC Alternative proposal Reason Material	(x) Catalogue (X) Previous Works (X) Certificates (x) Pre-Qualification Specified material	Decorative GRC (Mohammad Al Jilani Fiber Glass Cement Products Manufacturing L.L.C)	Consultant's receipt date & sign	Approval requested by (date)	Contractor's stamp & sign 		
Reference	Attachments	Material									
Specifications B.O.Q Bill No. 7B-D Use For purpose At place Suppling and fixing of decorative GRC Alternative proposal Reason Material	(x) Catalogue (X) Previous Works (X) Certificates (x) Pre-Qualification Specified material	Decorative GRC (Mohammad Al Jilani Fiber Glass Cement Products Manufacturing L.L.C)									
Consultant's receipt date & sign	Approval requested by (date)	Contractor's stamp & sign 									
For consultant's use											
Rejected	Approved subject to comments	Approved									
Comments With reference to your request for the approval of the GRC (Glass Reinforced Concrete) Subcontractor for the above-mentioned project, and following review of the submitted documents, please be informed that the proposed subcontractor is provisionally approved, subject to full compliance with the following conditions: - Strict compliance with the approved project specifications, contract documents, and Bills of Quantities. - Submission and approval of a certified Mix Design from an approved laboratory, indicating cement content, fiber ratio, and additives. - Submission of test certificates demonstrating compressive strength, tensile strength, water absorption, and weather resistance. - Approval of full-scale mock-up samples prior to mass production. - Submission and approval of detailed shop drawings clearly indicating fixing systems, connection details, anchor types, and corrosion protection measures. - All fixing components shall be hot-dip galvanized or stainless steel, in accordance with project specifications. - Submission of a detailed Method Statement covering manufacturing, transportation, storage, and use/installation procedures. - Compliance with the approved Inspection and Test Plan (ITP) for the project. - Ensuring uniform color, proper surface finish, and absence of cracks; any non-compliant elements shall be replaced immediately. - Provision of a written warranty covering manufacturing and installation defects in accordance with contractual requirements. - Any change in source, mix design, or fixing system shall require prior written approval from the Consultant. - This approval is conditional upon full coordination by the Main Contractor with the supervision team and strict adherence to the approved quality standards and durability requirements.											
	Sign & date (Consultant)	sign & stamp (E.P Representative)	sign upon fixing ** (Project Engineer)								
approval without which payment may not be released											

Transmittal Submittal			
511		Ref. No TS-C-11	Rev. No 0
Project Name:	U/C – G+2P+10Typ		
Location:	Plot No – 293, Mulk No – 511, Area – Gharb, Al Shuweheen, Sharjah, UAE		
Client:	GENERAL AUTHORITY FOR ISLAMIC AFFAIRS & ENDOWMENTS		
Consultant:	ROWAAD AL TASMEEM ENGINEERING CONSULTANT		
Main Contractor:	AL SERH AL KABEER CONSTRUCTION		
Date of Submission		09-March-2026	
Description			Attachments
Transmittal Submittal for Structural Calculation for GRC Works			As per attached documents
Main Contractor:		E-MAILED	Sub-contractor (if any):
UNDERNEATH TO BE FILLED BY CONSULTANT			
Comments: 1- Coordinate with the Post-Tension contractor to review the approved design loads and ensure their compliance with the project requirements. 2- Provide an Undertaking letter from both the main contractor and the specialized contractor, confirming their full responsibility for the installation method. 3- Submit the warranty certificate for the executed works.			
Stamp & Signature		Approved <input type="checkbox"/> Approved As Noted <input checked="" type="checkbox"/> Rejected/Resubmit <input type="checkbox"/>	Received by Main Contractor on: 08-Apr-2026

ALL APPROVALS



Jacobs **National Contracting**

Document Submittal

Project / Contract Title : R910/B - Bridge to Al-Hisn Island Contractor's Contract # R910/B
 Contractor : National Contracting & Transport Co. LLC Consultant: Jacobs/HIP Client: Sharjah Roads & Transport Authorities (SRTA)
 Document Submittal No.186 Rev.01 Date:06.03.2026

To: Attention: Mr. Arshad Hanif - Resident Engineer Submitted for
 Address: Jacobs/HIP As requested
 For Information / Record
 For Review / Comments
 For Approval
 For necessary action
 Email ID: Arshad.Hanif@jacobs.com
 Phone #: M +971 50 3436540
 Fax #:

Shipment Method: [by email / EDMS/ Hand Delivery / Courier] Confidentiality: [Yes/No]

Document Type: Document Submittal Previous Submittal Ref:

Discipline: [] Civil [] Mechanical [] Electrical [] Plumbing [] Other

SR.	Document No.	Description	Rev.	Copies	Remarks	Approval Code (For consultant use)
1	NCTC/R910-B/DS/186 R1	Structural calculations for GRC works	1	1		

For Contractor
 Name: Engr. Qamar Fares Designation: Project Manager Signature: Date:06.03.2026
 For Consultant Use Contract # R910/B
 Approved Approved subject to comments Revise and Re-submit before proceeding Rejected / Info & Record

*Comments:
 For information & record, out put should be reflected on the shop drawing.

Review and approval are only for general conformance with the concept of the project and general compliance with the information provided in the contract documents. Contractor, and his Subcontractor / Supplier, remains responsible for compliance with contract documents, confirmation and correlation of quantities and dimensions, selection of fabrication process and techniques, coordination of trades, and performance of this work in a safe and satisfactory manner.
 Use Submittal Review Sheet to track the closure of critical comments. Use legible handwriting.

Name: Mr. Arshad Hanif Designation: Resident Engineer Signature: Date: 10.03.2026

Project : R910B
 11 MAR 2026
 RECEIVED
 Sign:

Jacobs
 CONTRACT - R910B
 06 MAR 2026
 RECEIVED
 Time Sign

Jacobs **National Contracting**

Document Submittal

Project / Contract Title : R910/B - Bridge to Al-Hisn Island Contractor's Contract # R910/B
 Contractor : National Contracting & Transport Co. LLC Consultant: Jacobs/HIP Client: Sharjah Roads & Transport Authorities (SRTA)
 Document Submittal No.186 Rev.02 Date:25.03.2026

To: Attention: Mr. Arshad Hanif - Resident Engineer Submitted for
 Address: Jacobs/HIP As requested
 For Information / Record
 For Review / Comments
 For Approval
 For necessary action
 Email ID: Arshad.Hanif@jacobs.com
 Phone #: M +971 50 3436540
 Fax #:

Shipment Method: [by email / EDMS/ Hand Delivery / Courier] Confidentiality: [Yes/No]

Document Type: Document Submittal Previous Submittal Ref:

Discipline: [] Civil [] Mechanical [] Electrical [] Plumbing [] Other

SR.	Document No.	Description	Rev.	Copies	Remarks	Approval Code (For consultant use)
1	NCTC/R910-B/DS/186 R2	Structural calculations for GRC works	2	1		

For Contractor
 Name: Engr. Qamar Fares Designation: Project Manager Signature: Date:25.03.2026
 For Consultant Use Contract # R910/B
 Approved Approved subject to comments Revise and Re-submit before proceeding Rejected / Info & Record

*Comments:
 For Information & Record.
 Contractor to ensure that details in the calculations are incorporated in the shop drawing.

Review and approval are only for general conformance with the concept of the project and general compliance with the information provided in the contract documents. Contractor, and his Subcontractor / Supplier, remains responsible for compliance with contract documents, confirmation and correlation of quantities and dimensions, selection of fabrication process and techniques, coordination of trades, and performance of this work in a safe and satisfactory manner.
 Use Submittal Review Sheet to track the closure of critical comments. Use legible handwriting.

Name: Mr. Arshad Hanif Designation: Resident Engineer Signature: Date: 26-03-2026

Project : R910B
 26 MAR 2026
 RECEIVED
 Sign:

Jacobs
 CONTRACT - R910B
 25 MAR 2026
 RECEIVED
 Time Sign