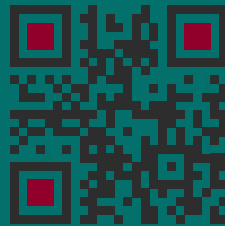




PRE-QUALIFICATION DOCUMENTS



GRC|GRP|GRG



Scan For Location

محمد الجيلاني لصناعة الاليف الزجاجيه ذ.م.م.ش.ش.و

MOHAMMAD

AL JILANI FIBER GLASS CEMENT PRODUCTS MANUFACTURING LLC.SP

Al-Sajja Industrial Area, Sharjah, United Arab Emirates

P.O.Box : 13240

Tel : 06 5737567

Mob : +971 525 652 404

Email : aljilanigrc@gmail.com

TABLE OF CONTENTS:



1. INTRODUCTION

2. ABOUT

- 2.1 ORGANISATIONAL CHART
- 2.2 COMPANY ACTIVITIES
- 2.3 QUALITY ASSURANCE
- 2.4 LIST OF COMPLETED & ON-GOING PROJECTS
- 2.5 PRE-QUALIFICATION HISTORY
- 2.6 PEAK DEMAND RESOURCES
- 2.7 INFORMATION TECHNOLOGY
- 2.8 LOCAL TECHNICAL STAFF
- 2.9 OVER SEAS TECHNICAL STAFF
- 2.10 KEY PERSONNEL

3. HEALTH & SAFETY

4. QUALITY SYSTEM PROCEDURE

5. LIST OF COMPLETED & ON - GOING PROJECTS

6. PHOTOS OF COMPLETED PROJECTS

7. LICENSES & VAT CERTIFICATES

8. CLIENTS

9. APPROVALS

INTRODUCTION



We are one of the leading manufacturers of GRC, GRP & GRG companies in United Arab Emirates

The company has 50 directly employed staff based in modern office complexes with extensive facilities. Within the group locally we are able to call upon AL JILANI GRC INDUSTRY Manufacturing divisions relating to Composite filed.

AL JILANI GRC INDUSTRY Manufacturing has the capacity and capability to undertake a wide range of Exterior & Interior solution with complex and diverse requirements, which meet the highest of international standards.

The in-house design team has the ability to turn client desire and concept into reality at the stroke of the pen, offering innovative design concepts and expert advice, this is then packaged and proposed, given to the project team for evaluation and costing. In

this way we are best placed to offer the client on the spot valued choice of achieve the best results at the right price. The diverse nature of the group further offers the client a wide and varied choice of materials and goods in the knowledge that all sourced requirements are to the correct quality. An addition to the group is the 20,000 sqft manufacturing plant, responsible for cast gypsum and associated products, another element towards are quality control of product. This further enhances and strengthens the AL JILANI GRC INDUSTRY Organization.

In addition, AL JILANI GRC INDUSTRY are committed to the development and training of all their staff in meeting rigorous standards in all fields of the industry.

AL JILANI GRC INDUSTRY highly motivated team work to a minimum of the BS standards operating a valuable QAQC procedure, looking to achieve excellence in what we do and how we achieve it.

CONCLUSION

AL JILANI GRC INDUSTRY are committed to a professional operation in order to achieve the highest of standards for the client, exceeding the client's expectations for their project.

OUR PRODUCTS



- GLASS REINFORCED CONCRETE(GRC)
- GLASS REINFORCED PLASTIC(GRP)
- GLASS REINFORCED GYPSUM(GRG)
- ALL TYPES OF BRACKETS, ROCKWOOL, STEEL & PAIT WORK ARE DONE.

ABOUT US



ORGANIZATIONAL CONSTANT - (Contact Details)

FULL ORGANIZATION NAME : MOHAMMAD AL JILANI FIBER GLASS CEMENT PRODUCTS
MANUFACTURING LLC.SP

REGISTERED ADDRESS : AL-SAJJA INDUSTRIAL AREA, SHARJAH, UNITED ARAB EMIRATES

CONTACT NUMBER : Tel : 06 5737567, Mob: +971 52 799 0673 / +971 50 685 3362

NATURE OF BUSINESS : SUPPLY, MANUFACTURING & FIXING OF:

- GLASS FIBER REINFORCED CONCRETE (GRC)
- GLASS FIBER REINFORCED PLASTIC (GRP)
- GLASS FIBER REINFORCED GYPSUM (GRG)
- ALL TYPES OF BRACKETS, ROCKWOOL, STEEL & PAINT WORK ARE DONE.

MANAGING DIRECTOR

MOHAMMAD JILANI MOLLA

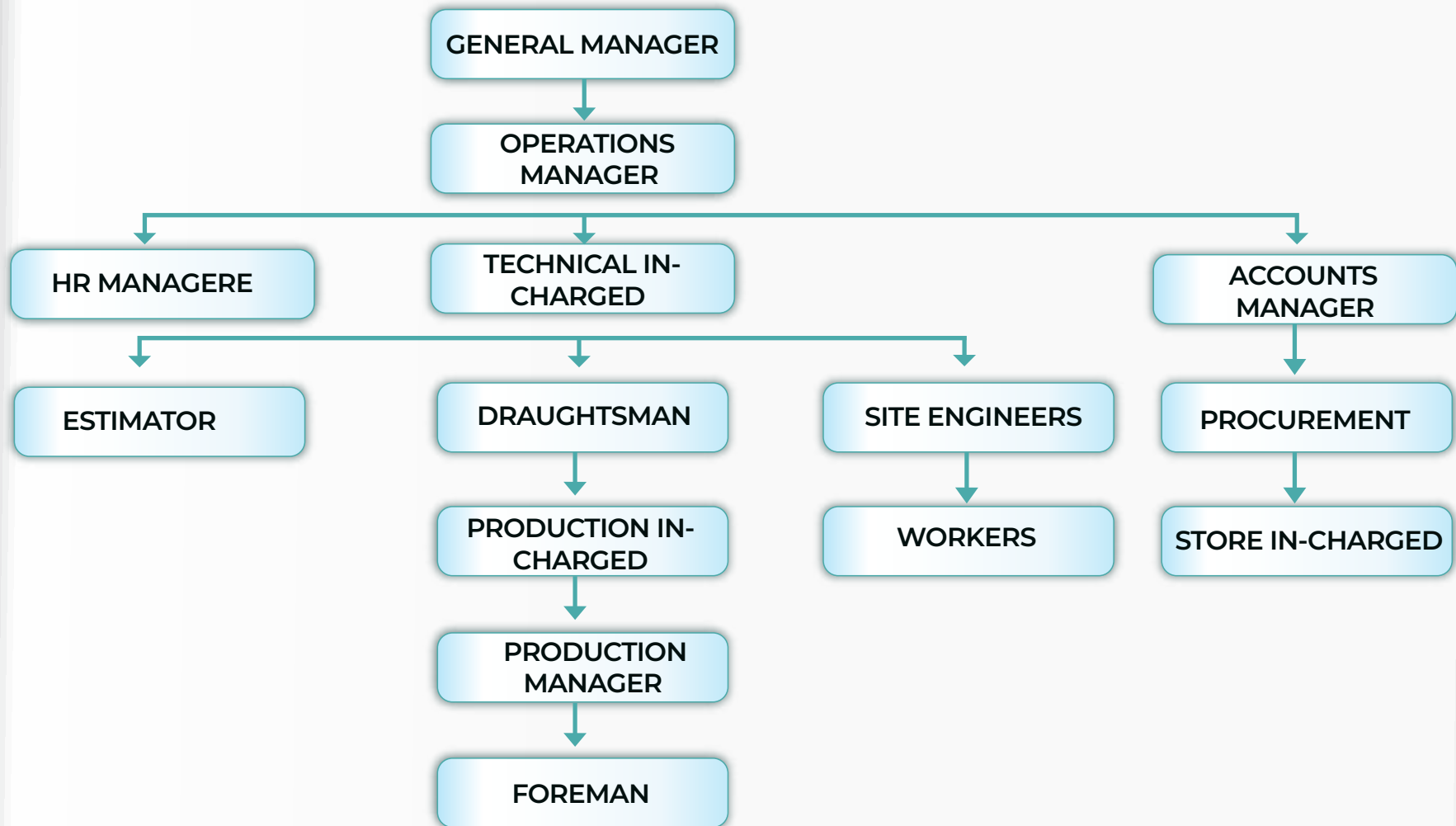
MOBILE NO.

+971 52 799 0673 / +971 50 685 3362

EMAIL ADDRESS

aljilanigrc@gmail.com

ORGANIZATIONAL CHART



QUALITY ASSURANCE



AL JILANI GRC INDUSTRY MAINTAIN A CONSTANT QA/QC POLICY ON ALL OF OUR PROJECTS IT IS MONITOR CLOSELY, BY OUR PROJECT MANAGERS AND FINAL INSPECTION BY OUR HEAD OUR OPERATION.

PRE-QUALIFICATION HISTORY



Pre-qualification Applications that our company has submitted during the last 2

A. SOBHAHARDLAND	1		Approved by SBHL
B. GRANBLUE	1		Approved by EMAAR
C. BLUE RHINE	1		Approved by BPC

INSURANCES* Insurance policy that our Organization currently has in place.

A. Employer's liability				WORKER'S COMPENSATION AS PER UAE LABOR LAW
-------------------------	--	--	--	---

LIST OF PLANTS & EQUIPMENT



TYPE OF PLANTS & EQUIPMENTS	QTY
A. POWER SPRAY MACHINE	3
B. MIXER MACHINE	4
C. COMPRESSOR 2000 LIT	1
D. AIR MACHINE	4
E. CARPENTER MACHINE	4
F. WELDING MACHINE	3
G. VIBRATION TABLE	2
H. TIGHTER MACHINE	10
I. DRILL MACHINE	15
J. HILTI MACHINE	25



LIST OF PLANTS & EQUIPMENT



TYPE OF PLANTS & EQUIPMENTS	QTY
K. GRINDER MACHINE 220	10
L. GRINDER MACHINE 110	10
M. HITLTI GUNS	10
N. SIKKA FLEX GUN	15
O. CORDLESS SCREW GUNS	7
P. CORDLESS DRILL MACHINES	10

TYPE OF PLANTS & EQUIPMENTS	QTY
A. 2 METER - ALUMINIUM LADDER	10
B. 3 METER - ALUMINIUM LADDER	10
C. 4METER - ALUMINIUM LADDER	10



INFORMATION TECHNOLOGY



List of hardware and software packages currently used within our organization:

CURRENT HARDWARE & SOFTWARE	QTY
A. AUTO CAD	2
B. AUTO DESK	2
C. TALLY 9	1
D. PRIMAVERA	1

Details of innovations & improvements made by our organization that are be spoke or unique:

- Al Jilani GRC Industry has its own GRC,GRP & GRG Factory at around 20000 square feet in area of which is located in UAE, this enable us to manufacture Decorative Gypsum Elements to be supplied as per requirement.
- We have our Division that provides all Machine Parts involved in or operations per requirements.

LOCAL MANAGERMENTS / EMPLOYEES



LIST OF EMPLOYEES:

DESIGNATION	NO.
DIRECTOR	1
MANAGER	1
PROJECTS ENGINEERS	2
PRODUCTION MANAGER	2
SUPERVISORS	9
TECHNICIAN / SKILLED OFFICE STAFF	10
ADMINISTRATION / COORDINATION STAFF	4
SKILLED WORKERS (SITE)	53
IN - SKILLED WORKERS (SITE)	20

KEY PERSONNEL:

NAME	DESIGNATION
MOHAMMAD JILANI MOLLA	CHAIRMAN
MOHAMMAD JILANI MOLLA	GENERAL MANAGER

HEALTH & SAFETY POLICY



HEALTH & SAFETY PROGRAMME

The Management considers no phase of its operations or administration of greater importance than accident prevention. To accomplish this goal and effectively understand the Safety Policy has been formulated and enforced.

Safety have been an integral part of each job and every employee should be responsible for the safety phase in his work just as much as any other phase. Every Employee has to contribute towards his team effort.

The Policy of this Company is to strive towards achieving a Safe and Healthy Environment for all its employees at all the work sites and abide by all rules and regulations formulated for the type of work/industry as set forth in state and local standards.

Safety is of utmost importance in performance of all operations and must be an integral part of each work task. Safety should not be neglected because of undue haste; no job is so important or services urgent that it cannot be performed safely. All employees must recognize their responsibilities in incorporating safety into their daily routine.

The Company Safety Program is designed to prevent human suffering, pain and economic loss from work place accidents, injuries or property damage.

The Health, Safety and Work Environment of all employees and contractors' personnel employed by Modern Cladding Industry is a major concern of the Management. The Management is also concerned with the prevention of property damage, fire and security damage as well as production losses. The Management is firmly committed to taking effective action on this concern with full regard to Federal Laws, Ministerial Decrees & the Company Safety Policy

HEALTH & SAFETY PROGRAMME



HEALTH & SAFETY PROGRAMME

Managers/Executives/Foremen and Supervisors are responsible for the safety of their subordinates and are required to treat occupational health, safety and loss control as a subject of major importance. They shall ensure that all practicable steps are taken to prevent accidents and maintain healthy, safe places of work.

In support of the commitment to safety, the Management monitors safety information and updates the information as required by corporate development or legislative change and ensures that safety rules are enforced, promotes awareness of safe working practices by induction courses, safety training programs and liaising with safety committees.

The Management firmly believes that safety comes First.

MANAGEMENT: AL JILANI GRC INDUSTRY

The Company strives as far as possible to provide a work place safe from recognized hazards by adhering to local regulations and industry safety standards and have a work force aware of workplace hazards that confront them and their safety responsibility to themselves, their fellow workers and the Company.

MANAGEMENT'S COMMITMENT TO SAFETY

The Management actively supports the safety effort at all levels. The policy is enforced by taking action to identify And control hazards so that everyone gets a clear message that Safety is Important'.

Clearly defined responsibilities are fixed for all levels of Management; it is an integral part of every task and is used in Evaluation of the overall performance of a team.

HEALTH & SAFETY POLICY



As supervisors know that safety is one of the yardsticks to measure their performance, they become more involved in the safety effort of the Company. The lines of communication between the Management and the employees are always open and the workers are encouraged to participate actively in identifying and controlling work place hazards as the employees at jobsites are best people to know the problem and conditions of site.

HAZARD IDENTIFICATION, FORMAL/INFORMAL INSPECTIONS

Informal inspections are made on a daily basis by supervisors and works before the commencement of work by examining their own work area and correcting any problems found before any injury results.

Our Company encourages workers to report problems to project Management's attention without fear of reprisals and a formal inspection is internally conducted by the company's Safety personnel. This helps in reminding the line supervisors their responsibilities of the safety effort. The inspection serves to keep everybody on his toes. A formal inspection report is included during this inspection with copies marked to the General Management.

PLANNING FOR SAFETY

Planning for safety starts during the process of mobilization of the project and continues till all work is completed and the last work man leaves the site. If safety is left to chance and considered an afterthought it will not be effective. Written guidelines are provided for all employees to follow in the Safety Handbook of the Company. A check-list is available during the planning stage for consideration in the implementation of the Safety Program

HEALTH & SAFETY POLICY



Project Safety Planning Check-List

- I. Will there be a full-time safety person assigned to the site.
- II. Are copies of-
 - A. Accident Report Sheets
 - B. Emergency phone number posters available at site.
- III. Are medical emergency services available?
- IV. Is there sufficient communication system in the workplace?
- V. Are workplaces security measures like fencing, lighting and watchman arrangements complete.
- VI. Is the electrical grounding in place?
- VII. Are sanitary fittings and drinking water available as per regulations?

The Following records/papers are to be available at the site:

- Safety signs, notices, posters and a copy of the Safety Handbook.
- The required maintenance and testing records for equipment at site like cranes, excavators, Compressors, dumpers etc.
- Accidents Report forms
- Warning signs, no smoking, Hard Hat area, No Trespassing etc. Certificates of First Aider for the Site.



First Aid Register-Recording all minor/major injuries and how they have Occurred. The following protective material is Check-list are also used:

- ✓ Hardhats/Helmets
- ✓ Safety Glasses, Goggles and Face Shields
- ✓ Safety Boots
- ✓ Hearing protection
- ✓ Gloves
- ✓ Fall protection Safety Belts
- ✓ Flash Lights
- ✓ Storage containers for Flammable and combustible materials
- ✓ Tags for defective tools and equipment

All work operations are periodically reviewed to determine if any additional safety Equipment is necessary. Inspections of all equipment, tools and supplies are made Prior to each use.



DISCIPLINARY ACTION

If the employees do not adhere to safety standards in spite of repeated warnings, a system of imposing Fine is being evolved with the rate of fine being proportional to the severity of the safety violation committed.

TRAINING COMMUNICATION

Safety training and orientation are necessary elements of any effective safety Program supervisors and Workers must understand the company's safety policy and procedures and hazards associated with work.

Training is provided to workers when they arrive on the site in the form of informal lectures on the safe Usage of tools, other equipment and the necessity of using personal protective equipment. The training Covers the company and projects safety policies and safety regulations.

Tool Box talks are also held weekly on the sites to refresh the memories on safe handling of various tools Used in the industry.

Site Foremen and Store Keepers are sent for First Aid/Fire Fighting Courses to keep them updated. These trained persons then communicate the knowledge gained by them to the other employees.

Films on safety are screened in the labor accommodation provided.

HEALTH & SAFETY POLICY



SAFETY & HEALTH POLICY STATEMENT

- Prevention of All Injuries and Occupational Diseases, Health and Safety is a Line Management.
- Health and Safety are of Equal Importance to the Business Objectives, Creation of a Safe and healthy Working Practices
- Ensuring Effective Health and Safety Communication.
- Creating Interest and Enthusiasm in Health and Safety.
- Developing Personal Responsibility and Safety
- We believe that Every Job can be Done Safely and that Safety is Everyone's Responsibility.

HEALTH & SAFETY POLICY



CALCULATION OF ACCIDENT-RATES

To compare the safety performance of one workshop with and other or one site with another, the following Formula is used for calculation of the frequency rate of accidents represented by letter F.

$F = \text{Number of Injuries} \times 1,000 \text{ Total Work Hours}$

Example: An undertaking with 500 workers working 50 weeks of 48 hours each had 60 accidents causing Injury during one year.

Owing to various factors like illness, accidents and other reasons workers were absent for 5% of the Aggregate working one. Thus, the total

Number of working hours $500 \times 50 \times 48 = 1,200,000$ has to be reduced by 5% thus giving total workers as 1,140,000

$$\begin{aligned} F &= \frac{60 \times 1,000}{1,140,000} \\ &= 52.63 \end{aligned}$$

This frequency rate indicates that about 53 accidents causing injury occurred per million working hours.

HEALTH & SAFETY POLICY



SEVERITY RATE OF ACCIDENTS

To obtain better idea of the situation, the severity rate is calculated on the basis of total number of days lost per thousand man-hours of work.

Example: If in the example given for frequency rate, the total days lost as a result to the 60 accidents was 1200, the severity rates would be:

$$\begin{aligned} S &= \frac{1,200 \times 1,000}{1,140,000} \\ &= 1.053 \end{aligned}$$

This means that about one day was lost per thousand-man hours of work or on the basis of 2400 work hours per year.

Practical demonstrations are made in areas for lifting techniques, firefighting, emergency procedures and first aid. Incentive Schemes are enforced such as what are wrong competitions and prizes for sites with minimum man-days lost on account of accidents.

Analysis of Accidents and man hours lost are calculated at half yearly intervals to arrive at the accident frequency rate and the Accident Incidence rate. The method used for calculation of accident rates and severity rates of accidents are given on the following pages.

Posters imparting the message of safety are put up in accommodation areas and in the pickup transport provided for workmen. Notice boards are put up on all sites with the safety regulations on them.

Pocket safety hand books are given to each site which contains safety rules.

QUALITY SYSTEM PROCEDURE

FIELD INSPECTION PLAN



1.0 PURPOSE

This procedure establishes the instructions for overall field inspection activities and the preparation and control of Inspection Plan (IP) for field construction activities, for Project Commercial & Residential building on plot No. 3678

2.0 SCOPE

This procedure is applicable to field inspection performed by AL JILANI GRC INDUSTRY and project procedure

3.0 DEFINITIONS

3.1 Inspection and Plan (IP)

A document, which identifies the main activities such as inspection, examination and test etc., to be performed during fabrication or installation.

3.2 HOLD POINT [H]

A designated point during or following a specific activity at which inspection or examination cannot be by-passed through next work without designated inspector's witness or any prior written.

3.3 WITNESS POINT [W]

A designated point during or following an important activity at which inspection or examination is required in accordance with the relative procedure. Work may proceed through the designated witness point if the inspector is not present for the previously established activity.

3.4 SPOT WITNESS POINT [SW]

A designated point during or following an activity at which spot inspection or spot examination is required in accordance with the relative procedure. Work may proceed through the designated witness point if the inspector is not present for the previously established activity.

3.5 REVIEW POINT [R]

It is processed through reviewing any result of inspection or test report as a method of ensuring that the inspection is performed in accordance with any approved drawing, procedure, specifications or acceptance criteria.

QUALITY SYSTEM PROCEDURE FIELD INSPECTION PLAN



3.6 SURVEILLANCE [S]

It is processed through the routine act of monitoring or observing to verify an item or activity conforms to specified requirements.

3.7 MAIN CONTRACTOR

EMIRATES LINK MALTAURO

3.8 CONTRACTOR/SUPPLIER

AL JILANI GRC INDUSTRY

4.0 REFERENCE

4.1 Project Quality Management Plan

4.2 Quality System Procedure QSP-004: Procurement Control Procedure

4.3 Quality System Procedure QSP-006: Non-conformance Product Control Procedure

4.4 Quality System Procedure QSP-007: Corrective and Preventive Action Procedure

4.5 Quality System Procedure QSP-009: Quality Record control Procedure

4.6 Division 1 Specification section 01400

QUALITY SYSTEM PROCEDURE

FIELD INSPECTION PLAN



5.0 RESPONSIBILITY

5.1 Quality Manager is responsible for;

- ☒ Controlling the overall inspection activities including field inspection.
- ☒ Reviewing of IP including designating of Witness / Hold points.
- ☒ Assigning the trained QC Engineers to QC inspection activities.
- ☒ Maintaining and updating the approved IP and its master files

5.2 The QC Engineer (QCE) is responsible for;

- ☒ Preparation of inspection plans.
- ☒ Selection of Witness / Hold points for work to verify conformance to the requirements of Specified documents. (i.e. procedure, specification, code and standard etc.)
- ☒ Performing the inspection pertaining to Witness / Hold points at the appointed time.
- ☒ Forwarding the audit plan and the audit checklist to QA/QC Manager for his review.

5.3 Each Manager of Construction Section is responsible for;

- ☒ Preparing Acknowledgment of IP including designation of Witness / Hold points .
- ☒ Overall supervising the work preparation for inspection activities.
- ☒ Providing timely written inspection notification to QCE in accordance with approved IP.

5.4 Field Engineer (SP) / Subcontractor are responsible for;

- ☒ Providing timely written inspection notification to QCE in accordance with approved IP.
- ☒ Taking a prompt corrective action for rejected items.

QUALITY SYSTEM PROCEDURE

FIELD INSPECTION PLAN



6. PROCEDURE

6.1 General

- 6.1.1 The inspection shall be performed by QC Engineer or Field Engineer using latest drawings, in Accordance with the requirements of job specification, applicable code and work procedures.
- 6.1.2 IP shall be prepared in writing for all items of the manufacturer activities and construction activities related to construction package of plant facilities according to contract requirement.
- 6.1.3 IP shall contain sufficient detail to ensure the proper performance of inspection .
- 6.1.4 The assignment of Witness / Hold points shall be documented on the IP by QCE and Owner.
- 6.1.5 Notification of Witness / Hold points shall be provided by SP /Subcontractor.
- 6.1.6 If it is necessary to repeat any operations that have been previously performed, re-inspection is required as original Witness / Hold points or adding additional pages to the IP, if required.
- 6.1.7 Vendor source inspection is required to apply 'Quality System Procedure for Shop Inspection & Test.(QSP-011)
- 6.1.8 Temporary work, and work not otherwise specified in the IP, may be record in the "General Inspection Report (Attachment 7.3)".
- 6.1.9 Contractor may convene a pre-inspection meeting before start of field inspection-activities.
- 6.1.10 Classification of Field Inspection is described as below.

QUALITY SYSTEM PROCEDURE FIELD INSPECTION PLAN



Type	Symbol
Vendor,s Test	VC
Contractor,s Witness	CW
Owner,s Witness	OW
Contractor,s Review	CR
Contractor,s Hold Point	CH
Owner,s Hold Point	OH

Category	Combination of Types
	VT & CR
B	VT & CW
C	VT,OW & CR
D	VT & CR
E	VT OH & CR

QUALITY SYSTEM PROCEDURE FIELD INSPECTION PLAN



AL JILANI GRC INDUSTRY shall convene a general Pre-Inspection Meeting with the Owner prior to the start of construction. The agenda for the pre-inspection meeting shall include the following;

- General policy and procedure for field inspection
- Field Inspection organization
- Categorization of field inspection Items
- Applicable Codes, Standards, Criteria, Requirements, etc.

Communication channels within the AL JILANI GRC INDUSTRY 's organization and between the Owner and \ AL JILANI GRC INDUSTRY.

6.2 Application for and Notice of Witness

6.2.1 For the field inspection items agreed to be classified as Category A, B, D, HDEC may proceed with the inspection.

6.2.2 For Category C, E field inspection items, inspection procedure is as follows;

1. Shall submit to the Owner a "Request for Inspection (Attachment 7.1)" notification, a minimum of 1 Working day prior to the proposed inspection.
2. If it becomes necessary for the Contractor to change the schedule (date, time, etc.), He shall Promptly notify the Owner of the proposed change.
3. Category C, E inspection shall be scheduled by GRC UNIVERSAL DECORATION only during Owner's working hours as defined in Contract document or agreement between AL JILANI GRC INDUSTRY and Owner . In case that the night shift working crew are organized, the Witness inspection will be scheduled in night time.
4. For the items fabricated by subcontractor from outside of SHARJAH QC Engineer shall provide Inspection notification to Owner at least 1 week in advance for required Witness / Hold points. (Refer to Quality System Procedure for Shop Inspection & Test, QSP-011)

QUALITY SYSTEM PROCEDURE

FIELD INSPECTION PLAN



6.3 Notice from the Owner to AL JILANI GRC INDUSTRY

6.3.1 After receiving the application from AL JILANI GRC INDUSTRY under paragraph 6.2.1, 6.2.2 above, the Owner shall notify AL JILANI GRC INDUSTRY whether it intends to witness the field inspection on the proposed date or make any schedule adjustment with AL JILANI GRC INDUSTRY as necessary.

6.2.3 After receiving the application from AL JILANI GRC INDUSTRY, the Owner shall notify to AL JILANI GRC INDUSTRY whether it intends to witness the field inspection on the proposed date or make any schedule adjustment with AL JILANI GRC INDUSTRY as necessary.

6.2.4 When AL JILANI GRC INDUSTRY notification is acceptable and the witness inspection is to be carried out timely, the Owner may confirm the schedule on the copy of Notification Sheet submitted by means of simple stamping or signing.

6.4 Inspection-plan(IP)

6.4.1 Inspection and Test Plan shall be prepared by QC Engineer according to construction detail schedule on the basis of the applicable drawings, work plan procedures and specifications.

6.4.2 IP prepared by QC Engineer shall be approved by the QA/QC Manager.

6.4.3 QC Engineer / SP shall submit internally reviewed and approved inspection to Owner for Witness / Hold points selection and approval of those inspection plans at reasonable working days in advance of the activity.

6.4.4 QC Engineer / SP shall distribute copies of final accepted inspection plan to all concerned parties (SP / QCE / Owner).

QUALITY SYSTEM PROCEDURE FIELD INSPECTION PLAN



6.5 Field Inspection and Remedial Work

6.5.1 QC Engineer / SP follow up the inspection activities in accordance with the approved inspection and test plans. QC Engineer / SP prepare for inspection schedule weekly.(Attachment 7.4).

6.5.2 In the event that the construction work or the materials and equipment fail to pass the field inspection in part or in whole, shall BE rectify or replace such defective portion, and following shall apply

1. For the Field items in Category A, B, D, shall repeat the Field Inspection in the same manner and until such time as the items meets all the requirements of the specification.
2. For the Field Inspection items in the Category C, E, repeat the notification and witness inspection until the modification is satisfied to the requirements as same manner of previous clause 6.2.2

6.6 Subcontractor / Field Engineer shall notify the assigned inspection / test point to QCE and Owner for inspection, in one day advance.

6.7 QCE / Owner follow up the inspection activities in accordance with the requirements of applicable procedure and IP.

7. DOCUMENTATION

7.1 The inspection results shall be documented on the related reports / checklists.

7.2 The inspection records shall be retained in QC department.

8. ATTACHMENT

8.1 Inspection Report Numbering System

8.2 Form QSP-010/1 Request for Inspection / Test

8.3 Form QSP-010/2 Field Inspection and Test Plan

8.4 Form QSP-010/3 Check List for OOOOOO

8.5 Form QSP-010/4 Check List for General

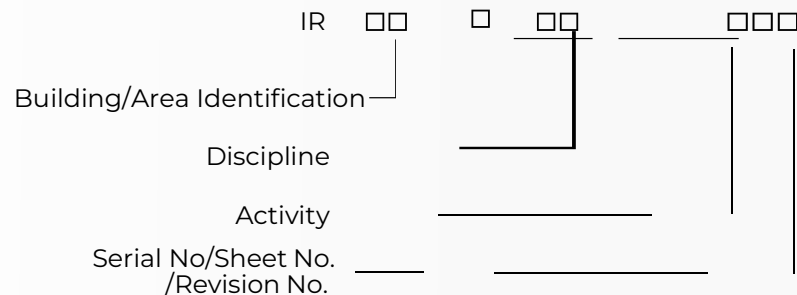
8.6 Form QSP-010/5 Weekly Inspection Schedule sheet

QUALITY SYSTEM PROCEDURE FIELD INSPECTION PLAN



Attachment 8.1. Inspection Report Numbering System

- ☒ All Inspection reports except for vendor/TPA report shall include AL JILANI GRC INDUSTRY document numbering in the following format:



IR: Inspection Report

Building/Area Identification

Discipline

A: Architecture
I: Instrumentation
L: Landscape
G: General

C: Civil
S: Steel Structure

Activity

Ex) EW(Earth work), CW(Concrete work..., etc.

Serial Number 3(three) digit
001, 002, 003, 00

QUALITY SYSTEM PROCEDURE FIELD INSPECTION PLAN



Attachment 8.2. Form QSP-010/1 Request for Inspection

Form QSP-010/1

☒ The format of Contractor RFI (Request For Information) shall be utilized the Construct ware program.

QUALITY SYSTEM PROCEDURE INSPECTION & TEST PLAN FOR EXTERIOR GRC WORKS



A. Term and definition

- AL JILANI GRC INDUSTRY : Contractor
- Hold Point (H): A designated point during or following a specific activity. Work may not proceed beyond this point until the inspection has taken place and been witnessed by the required parties.
- N/A: Not applicable.
- Review Point (R): It is processed through reviewing any results of inspection or test as a method of ensuring that the inspection or test is performed in accordance with any approved drawing, procedure, specifications or acceptance criteria.
- Spot Witness Point (SW): A designated point during or following an activity at which spot inspection or spot examination is required in accordance with the relative procedure. Work may proceed through the designated witness point if the inspector is not present for the previously established activity.
- Subcontractor (SUB): Any company or person, to whom has sub-contracted directly or indirectly at any level, any part of the project including consortium member.
- Surveillance (S): It is processed through the routine act of monitoring or observing to verify an item or activity conforms to specified requirements.
- Witness Point (W): A designated point during or following an important activity at which inspection or examination is required in accordance with the relative procedure. Work may proceed through the designated witness point if the inspector is not present for the previously established activity.

QUALITY SYSTEM PROCEDURE

INSPECTION & TEST PLAN FOR EXTERIOR GRC WORKS



A. Inspection Level (refer QSP-010 Clause 6.0)

For the field inspection items agreed to be classified as Category A, B, D, may proceed with the inspection or tests.

For Category C, E field inspection items, inspection procedure is as follows;

- 1) AL JILANI GRC INDUSTRY shall submit to the Owner a “Request for Inspection / Test” notification, a minimum of 1 working day prior to the proposed inspection.
- 2) If it becomes necessary for the Contractor to change the schedule (date, time, etc.), He shall promptly notify The Owner of the proposed change.
- 3) Category C, E inspection shall be scheduled only during working hours as defined in Contract Agreement. In case that the night shift working crew are organized, the witness inspection will be scheduled in night Time.
- 4) For the items fabricated by subcontractor from outside of Sharjah, QC Engineer shall provide inspection Notification to Owner at least 1 week in advance for required Witness / Hold points.

LIST OF PROJECTS



	CONTRACTOR	PROJECT NAME	SCOPE OF WORKS	PROJECT VALUE	COMPLETION (YEAR)
01	WADI AL DECOR CONT	AL MAMZAR PARK	GRC/GRP	1.50 Million	2019
02	AL SHARAF GRC LLC MAINTENANCE CONTRACTING	MAKKAN HATTA	GRC/GRP Work	08.0 Million	2019
03	GRANDOR INTERIOR LLC	BOMBAY RESTAURANT	Supply & Installation of GRC	01. Million	2021
04	ELEMENTS DECOR DECOR LLC	AROLINK PUBLIC AREA Centre	GRC/GRP Work	05.0 Million	2021
05	AROMATIC FIBER GLASS DEVELOPMENT	AJMAN	GRC/GRP Work	4.0 Million	2020
06	SENSIBLE GROUP	AJMAN	Supply & Installation of GRC Cladding	0.90 Million	2020
07	DECO PANI CLODDING LLC	DUBAI	Installation of GRC	1.0 Million	2020
08	AL ROSTAMANI TRD.CO.	DEIRA DUBAI	Supply & Installation of GRC	1.5 Million	2020
09	GRC DESIGNING FAC.	RESID.VILLA	Installation of GRC GRC Elements	1.0 Million	2020
1	INAYA FMS	PAHA APT-423 (Building)	Supply & Installation of GRC Cladding	2.0 Million	2021

LIST OF PROJECTS

AL JILANI GRC

SI	NCONTRACTO	PROJECT NAME	SCOPE OF WORKS	PROJECT VALUE	COMPLETION (YEAR)
11	GRC ART LINE	BATIA	Supply & Installation of GRC Deco Panel	0.5Million	2022
12	TCTI BRANCH OF WAFI IND.	AL BADIA PHA	Installation of GRC Cladding, Screens	1.0Million	2022
13	AL BAIT AL MALAKY	ARADA SHAR	GRC Installations	1.0 Million	2022
14	GRC UNIVERSAL DECORATION	ASHIYANA	GRC Installations	0.6Million	2022
15	ARAB SQUE STONE INTERIOR DEC.	DUBAI	GRC Installations	0.8Million	2021
16	PANTHEON ELYSEE REAL ESTATE DEV.	PRIVATE VILLAGRC	Deco Panels, GRC Dome & GRC Screen	1.25Million	2022
17	M/s NATIONAL ALUMINIUM. LLC	APIBARSHA RESIDENTIAL	GRC Panels, GRC Dome & GRC Screen	0.6Million	2022
18	DUTCO CONTRACTING LLC	GRC Cladding – Dubai Mall	Supply & Installation of GRC Panel Light, Grey Color, Stone Finish with protective Coating	1.6Million	2020

LIST OF PROJECTS

(MOST RECENT)



	CONTRACTOR	PROJECT NAME	SCOPE OF WORKS	PROJECT VALUE	
19	ZAHRAT MASAFI	PROPOSED BLDG	Supply & Fixing of GRP	0.30Millio	2023
20	GREENLINE BARSHA, FIBER GLASS	DUBAI	Supply & Installation,of GRC	2.0Million	2023
21	TCTI CONTRACTING	GRANDBLUE	Supply & Installation of GRC	3.00 Milion	2023
22	BLUE PEARLS CONT.LLC	DUBAI	FIXING & FINISHING GRC	0.10 Milion	2023
23	BLUE RHINE CONTRACTING LLC	AL- BARARI VILLA	Supply & Installation of GRC	0.50 Milion	2023
24	TCTI	DUBAI CREEK HARDBOUR(ECC)	Supply & Installation of GRC	2.0 Milion	2022
25	SOBHA CON.	REVATHI MENON PRIVATE VILLA	GRC Installation Panels, Cladding, Screens	1.0 Milion	2023

PROJECTS



AL WAHDA MALL ABUDHABI GRC CLADDING



MARINA DUBAI



CORNICE TOWER SHARJAH



EXPO 2020 DUBAI



EXPO 2020 DUBAI



EXPO 2020 DUBAI

AL JILANI GRC



SOBHA HARTLAND DUBAI



SOBHA HARTLAND DUBAI



GRC DECORATION



Residential Building

MIRACLE GARDEN (ARJAN)



MARINA



GRC - Glass Fiber Reinforced Concrete



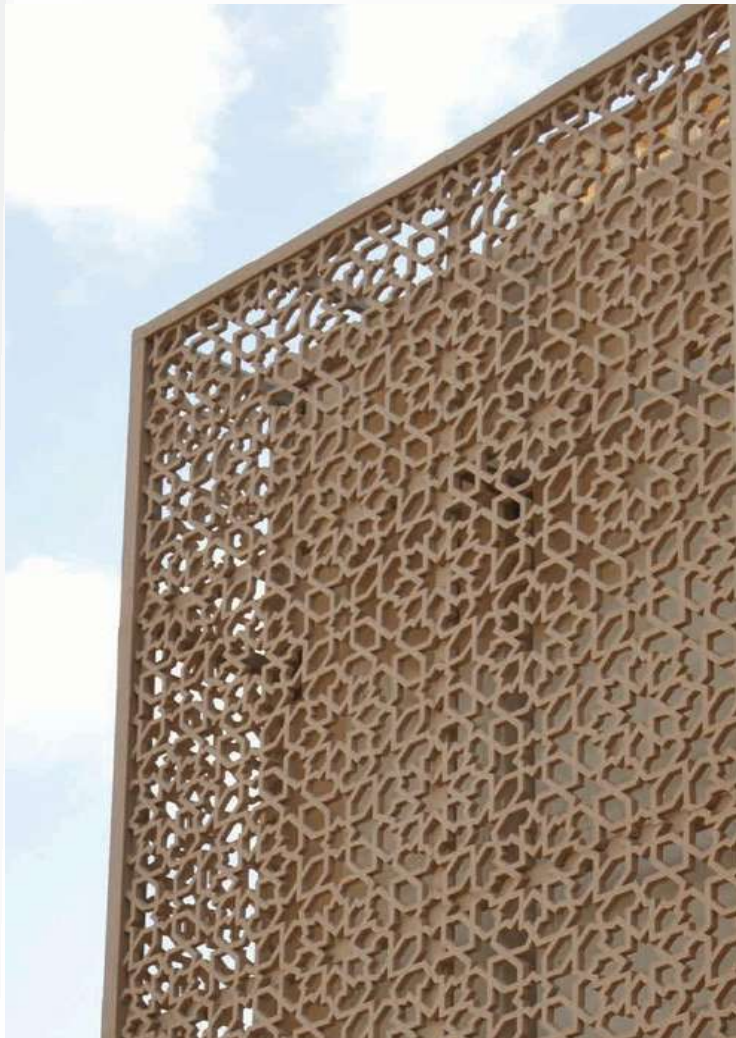
GRC - Glass Fiber Reinforced Concrete



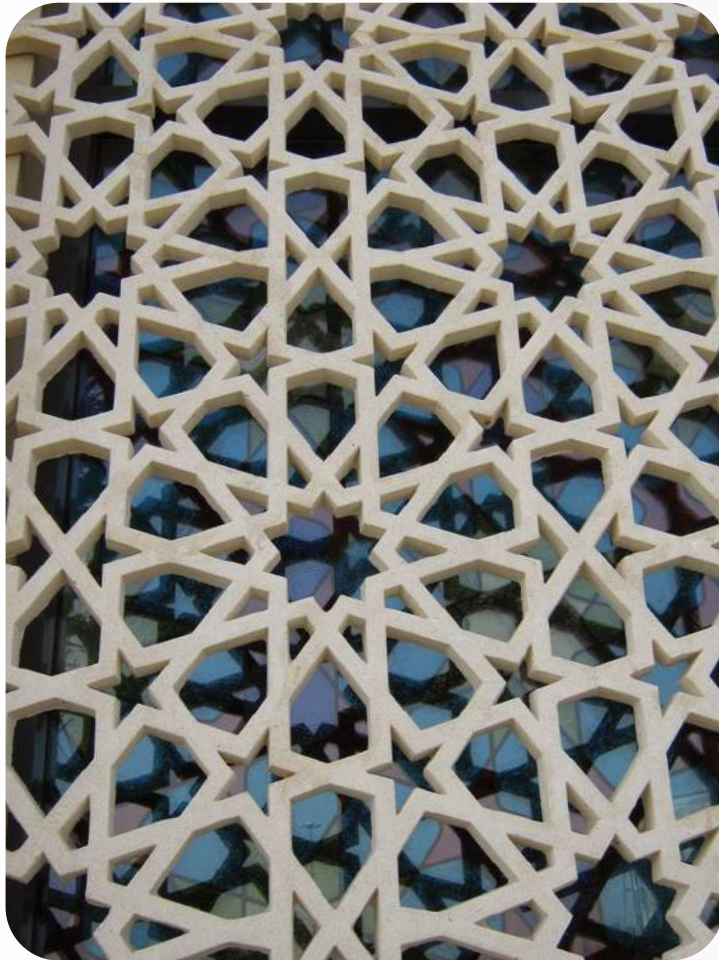
GRC - Glass Fiber Reinforced Concrete



GRC - Glass Fiber Reinforced Concrete



GRC - Glass Fiber Reinforced Concrete



GRC GRP INSTALLATION



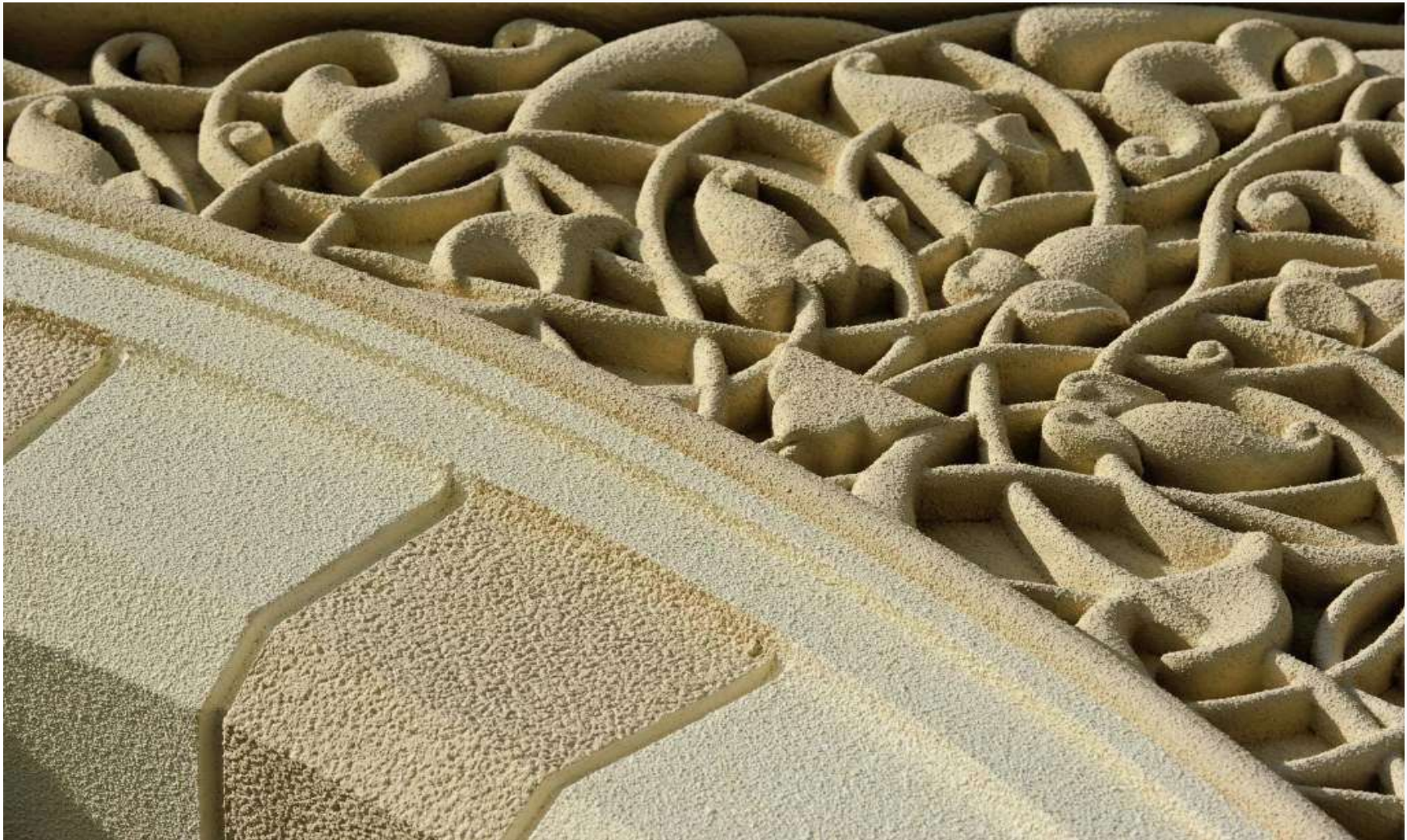
GRC-Mouldings



GRC CORNOCES



GRC - Glass Fiber Reinforced Concrete



GRC CORNICE



GRC CORNICE



GRC CORNICE



AL JILANI GRC INDUSTRY OPENING CEREMONY



AL JILANI GRC INDUSTRY FOREMAN ANNUAL GIFT



AL JILANI GRC INDUSTRY ANNUAL GIFT



AL JILANI GRC INDUSTRY TRANSPORT



AL JILANI GRC INDUSTRY MAIN GATE



Project List



- Dubai Mall
- Sobha hartland Dubai
- Al Wahda
- Burj Crown Dubai
- Ibnu Bathootha
- Al Reem Island Abu Dhabi
- Hatta Army Villa
- Flydubai Headquarters
- Al Bahiya Residence Dubai
- Al Tower Dubai
- Azeezi Residence Nad Al Shiba
- Marina Vista Tower Dubai
- Dubai Creek Tower
- Villas At Nad AL Shiba
- Deira Water Front Development Project Dubai
- Naif Gold Souk Dubai
- Fujaitra Fish Market
- Ashiyana Dubai
- Albadiaphase4 Residence Development

INDUSTRIAL LICENSE



GOVERNMENT OF SHARJAH
Economic Development Department

حكومة الشارقة
دائرة التنمية الاقتصادية

رخصة صناعية
Industrial License

902862

تفاصيل الرخصة

Issue Date	15-12-2023	تاريخ الإصدار	License No.	902862	رقم الرخصة
Expiry Date	15-12-2024	تاريخ الانتهاء	Registration No.	902728	رقم السجل

محمد الجيلاني لصناعة الألياف الزجاجية ذ.م.ش.و

الاسم التجاري

Trade Name MOHAMMAD AL JILANI FIBER GLASS CEMENT PRODUCTS MANUFACTURING L.L.C.SP

Legal status Individual Company L.L.C

الشكل القانوني شركة ذات مسؤولية محدودة - الشخص الواحد (ذ م م)

أطراف الرخصة

الخصص	الصفة	رقم الهوية / الدوايز	الجنسية	اسم المستثمر	رقم المستثمر
Shares	Type	ID \ Passport No	Nationality	Investor Name	Investor No
100.0 %	المالك	784197809075179	بنغلاديش	محمد الجيلاني مولا عبدول حكيم مولا	4983205
	Owner		BENGLADESH	MOHAMMAD JILANI MOLLA ABDUL HAKIM MOLLA	

محمد الجيلاني مولا عبدول حكيم مولا

المدير

صناعة المنتجات الأسمنتية المقواة بالألياف الزجاجية

أنشطة الرخصة

الشارقة-الصحبة صناعية/الشارقة-شارع الإمارات مكتب-أرض مسورة ملك ملك كنوشة عوض سيف حمدي الكتيبي

العنوان

0506853342

الهاتف المشترك

0

الشارقة

صندوق البريد

www.sedd.ae 80080000

GOVERNMENT OF SHARJAH
Economic Development Department

حكومة الشارقة
دائرة التنمية الاقتصادية

شهادة سجل صناعية
Industrial Register Certificate

902862

تفاصيل الرخصة

Issue Date	15-12-2023	تاريخ الإصدار	License No.	902862	رقم الرخصة
Expiry Date	15-12-2024	تاريخ الانتهاء	Registration No.	902728	رقم السجل

Capital 300000

رأس المال

محمد الجيلاني لصناعة الألياف الزجاجية ذ.م.ش.و

الاسم التجاري

Trade Name MOHAMMAD AL JILANI FIBER GLASS CEMENT PRODUCTS MANUFACTURING L.L.C.SP

Legal status Individual Company L.L.C

الشكل القانوني شركة ذات مسؤولية محدودة - الشخص الواحد (ذ م م)

المدير محمد الجيلاني مولا عبدول حكيم مولا

أنشطة الرخصة صناعة المنتجات الأسمنتية المقواة بالألياف الزجاجية

العنوان الشارقة-الصحبة صناعية/الشارقة-شارع الإمارات مكتب-أرض مسورة ملك ملك كنوشة عوض سيف حمدي الكتيبي

www.sedd.ae 80080000